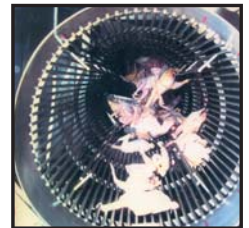


# poultry processing plants

answer to all your poultry processing needs

1,000 - 10,000 Birds Per Day



# dhopeshwar engineering poultry processing

**Engineering poultry processing plants and poultry rendering plant.**



Dhopeshwar Engineering Pvt. Ltd. (DEPL) is a supplier of process plant with over four decades of experience in the field. DEPL specializes in the development & supply of process plants on Turn-key. DEPL supplies poultry processing and waste rendering plants. Apart from the poultry sector, DEPL also supplies process plants on turn-key for the Agricultural and Chemical Processing industries.

In the poultry processing sector, DEPL provides complete project services for the processing unit and supplies the processing plants & machineries. Started in 1963 by Mr. S.G. Dhopeshwarkar as a Chemical Engineering unit, it supplied plant & equipment for reputed chemical & Pharma companies including Nuclear Fuel Complex, Defence Labs etc. These included stainless steel Jacketed Reactors, Double Cone Blenders, Double Cone Vacuum Driers, Ribbon Mixers etc. Shirish Dhopeshwarkar joined the organization in 1977 and started engineering for other processing sectors. In early 90's, the company evolved into Agri. Engineering & poultry engineering. DEPL started supplying Essential Oil Distillation Plants. Aloe Vera Gel & Juice Plants etc. in Agriculture Processing Sector & plants for poultry processing.

Over the last 4 decades, DEPL has supplied process equipments & machineries used in the following sectors: Chemical, Distilleries, Explosive Manufacturing, Defense

Establishment - R&D units, Agricultural & Veterinary Universities as well as Poultry Processing sector.

DEPL, over the years has expanded its range in Poultry Processing by supplying Conveyorise & Non-Conveyorised Plants for Poultry Processing and eco-friendly plants for waste rendering. Presently it has a successful range of plants and equipment for poultry complimented by plants for other Sectors.

With a large client base in India and overseas markets, DEPL strives to offer plant & equipment backed by well developed engineering infrastructure complimented by reliable support services. The company has the experience of supplying Process Plants on Turn-key in India and overseas. It's decades of experience coupled with product knowledge, emphasis on quality & service, commitment to meet relevant standards has lead to its success. DEPL's supply has earned the confidence & trust of customers in India and overseas.

Shirish Dhopeshwar, the present CEO of Dhopeshwar Engineering has more than 3 decades of experience. DEPL presently offers complete engineering solutions for processing industries. It's experience and expertise in supply makes Dhopeshwar Engineering an ideal partner for machinery in poultry processing and waste rendering. Our range provides our client the advantage of total packages for their Poultry processing project.





# poultry processing plant

## Conveyor Dressing Plant - Semi-Automatic

Capacity : 500 Birds per hour to 1000 Birds Per Hour(BPH)

Dhopeswar Engineering has successfully delivered complete poultry processing plants in different capacities. Over the years, the company has supplied poultry dressing automation ranging from 1000 birds per day to over 12,000 birds per day. This experience has enabled Dhopeswar Engineering to provide turn-key solutions in the setting-up of these plants.

The processing plant is the hub of integrated poultry operations. The Dressing plant consists of overhead conveyor having stainless steel shackles on which live birds are hung. The conveyor ensures minimum human handling. It runs endlessly through different processing zones ensuring that the bird goes through stunning, Halal, bleeding, Hot water scalding, Feather plucking etc. The entire processing is carried out by different machines automatically while the bird remains on the conveyor. In the evisceration zone, internal cleaning is carried out manually.

The end product is a dressed bird with skin. The bird is off-loaded from the conveyor after the final stage of

processing and sent for chilling, portioning, blast freezing and storage. Scientifically designed bird conveyor and process machinery's ensure completely hygienic processing conditions. Advanced design in scalding and defeathering ensures easy adaptability and use of different sized poultry with the same plant & machinery's.

Unique Features of the dressing plant:-

- **Modular** - The capacity of plant is expandable but needs to be planned at design stage.
- **Automated** - Entire operations on conveyors.
- **Flexibility** - The plant can dress varying size of poultry (from 1.0 to 3.5 kg live wt.)
- **Capacity** - Range starts from 100 birds per hour to 1000 birds per hour.
- **Hygiene** - All the process machineries including conveyor shackles are in Stainless Steel. Scientifically designed machineries with least human intervention helps in delivering the best quality meat.
- **Cost Effective** - Low power consumption and less manpower.





# mini processing plant

**Capacity : 100 Birds per day to 2000 Birds Per day**

Dhopeswar Engineering also supplies function-specific equipment to small and mid-sized dressing businesses. These equipment are ideal for operations of about 100 to 2000 birds per day. The equipment conform to the highest standards of engineering and can be easily set-up at farms or market shops and are fairly easy to operate. Made from stainless steel, these equipment ensure excellent hygiene and requires low maintenance.

This equipment comes in 4 capacities:

1. Upto 200 birds per day
2. 250 to 500 birds per day
3. 500 to 1000 birds per day
4. 1000 to 2000 birds per day.

In the 1st & 2nd model will only have the 3 basic equipments while the 3rd & 4th range will have the 3 basic equipments and other important equipment.

Unique Features of the dressing plant:-

- **Modular** - The size of equipment varies according to the dressing capacity per day and can process 500 to 2000 birds/day.
- **Flexibility** - The plant can dress varying poultry sizes (from 1.0 to 3.5 Kg)
- **Hygiene** - Scientifically designed machineries as well as unit layout ensures most hygienic dressing helping deliver the best quality meat. All the process machineries including conveyor shackles are of Stainless Steel
- **Capacity** - Range starts from 500 birds per day to 2000 birds per day
- **Cost Effective** - The equipment are easy to set-up at Farm or market shops & and are low power consumption and needs less manpower easy to operate & easy to maintain.



### Basic 3 equipments: 100 to 500 birds per day

#### 1. Killing Cone



Rotating cone stand with revolving cones for Killing & Bleeding - 8 to 24 cones, Single tier and Two tier, blood collecting trough

#### 2. Hot Water Scalder

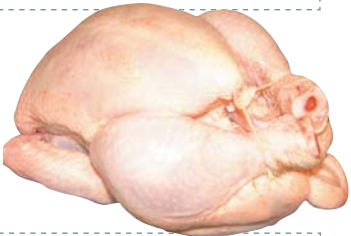


Hot Water Scalding - automatic temperature control, strong arm, lifting cage, gas and electrical heating, hand winch - 6 to 12 birds

#### 3. Feather Plucker



Feather Plucker for 5 to 15 birds, 24" to 30" diameter, feather discharge hopper and bird discharge hopper



### Other Equipments: 500 to 2000 birds per day

#### 4. Screw Chiller



Chills the bird from 50°C to 5°C from 1 Mtr to 1.5 Mtr diameter

#### 5. Drip Roller Drum



Removes excess water from the dressed bird, water collection tray

#### 6. Evisceration Conveyor



Stand-alone conveyor for Evisceration - cleaning of internals

#### 7. Portion Cutter machine



For portioning

#### 8. Vacuum Lung Gun



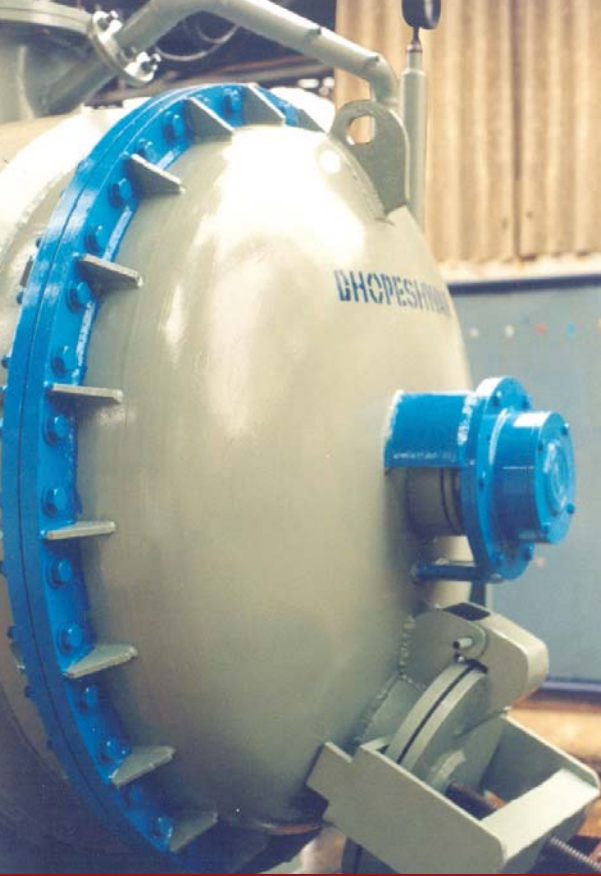
For vaccumised cleaning of lungs

#### 9. Feet Skin Plucker



Feather Plucker for 5 to 15 birds





# poultry-waste rendering plant

**Capacity : 100 Birds per day to 2000 Birds Per day**

Dhopeswar Engineering has developed rendering plants that incorporate the latest vacuum drying operations with a unique baro spray system that prevents air pollution and ensures eco-friendly operations. Its robust built and sophisticated monitoring systems provide maximum convenience and safety of operation.

Poultry Rendering Plant consists of a Digestor-Cooker-Homomiser and is an indispensable part of every poultry processing facility. Also called protein-recovery plants, this facility helps convert the non-edible waste (offal as well as feathers) from the processing and hence helps in managing pollution. Rendering converts this waste into sterilized, homogenized meat meal which could be used as animal protein or as an organic fertilizer.

Unique features of our Rendering Plant

- **Profitable** - Rendering is more effective than any other waste-disposal method
- **Scientific** - Robust engineering to ensure safety & ease of operations.
- **Eco-Friendly** - Superior Gear drive & Vacuum drying and vapor scrubbing operation to reduce energy & air pollution while recovering animal protein
- **Hygiene** - Scientifically designed machineries as well as layout ensures hygienic conditions in plant.
- **Capacity** - Different capacity plants for different needs

Our range starts from 100 Kgs Digestor (for Veterinary / Research Institutes) to 2500 kgs Digestor for commercial scale operations.

## Sterilised Meat Meal

The Rendering involves cooking of waste under pressure to ensure Hydrolysis of Feathers as well as Sterilization of homogenized waste. The Meat meal made from combined waste (offals & feathers) will have about 50 % Protein & 20 % fat while meat meal made from "only feathers" will have higher Protein content, about 80 % but lower digestibility. The 20% fat in meat meal makes it soggy & unstable for storage. Fat can be removed by centrifuge or made stable with enzyme or absorbed with dry material. We have already supplied many plants for commercial operations & for Veterinary Institutions in India.

## Plants and Capacities:

Poultry Processing Plant	Mini Processing Plant	Rendering Plant
500 to 1000 birds per hour (4000 to 10000 birds per day) 1.5 Kg. to 3 Kg live weight	500 to 2000 birds per day	500 to 2500 kgs of waste per batch Meat meal is 30% of waste or 9% of live weight
Equipments of Processing Plant	Equipments of Mini Processing	Equipments of Rendering plant
Conveyor with SS shackles Electrical stunner machine Hot water scalding De-feathering machine/ plucker Screw chiller Drip roller Bird washer Pre-cooler Lung suction gun	Killing cone table - with tray Hot water scalding - auto control Drum plucker - with hoppers Evisceration conveyor/ tables Screw chiller Drip roller Portion cutting machine Lung suction gun Vacuum packaging machine	Digestor-Cooker-Homogeniser Barometric spray condenser Solid separator Oil extracting centrifuge Meat meal bin Screw conveyor for bagging Vacuumised conveying system Vacuum pump & Piping Steam Boiler with accessories

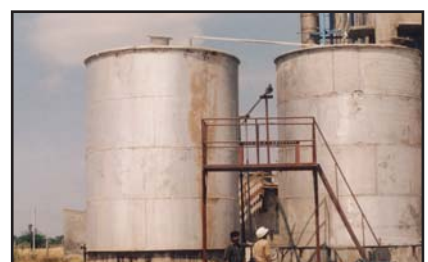
Dhopeswar Engineering also provides mechanised solutions to the agricultural and chemical processing industries.

## Essential Oil Distillation Plants



• Essential Oil Plants for Rose, Sandalwood, Eucalyptus, Patchouli, Ginger etc. • Aloe Vera Juice Plants

## Chemical Process Equipment



• Stable Bleaching Powder Plant • Cashewnut Shell Resin Plant - Cardanol • Double Cone Vacuum Dryer • Aluminium Tanks



A-16, Co-operative Industrial Estate, Balanagar, Hyderabad - 500 037, Andhra Pradesh, India  
Cell: +91 93910 58963 Tel: +91 40 2377 1579 Fax: +91 40 2377 2450  
e-mail: [info@dhopeshwar.in](mailto:info@dhopeshwar.in)  
[www.dhopeshwar.in](http://www.dhopeshwar.in)