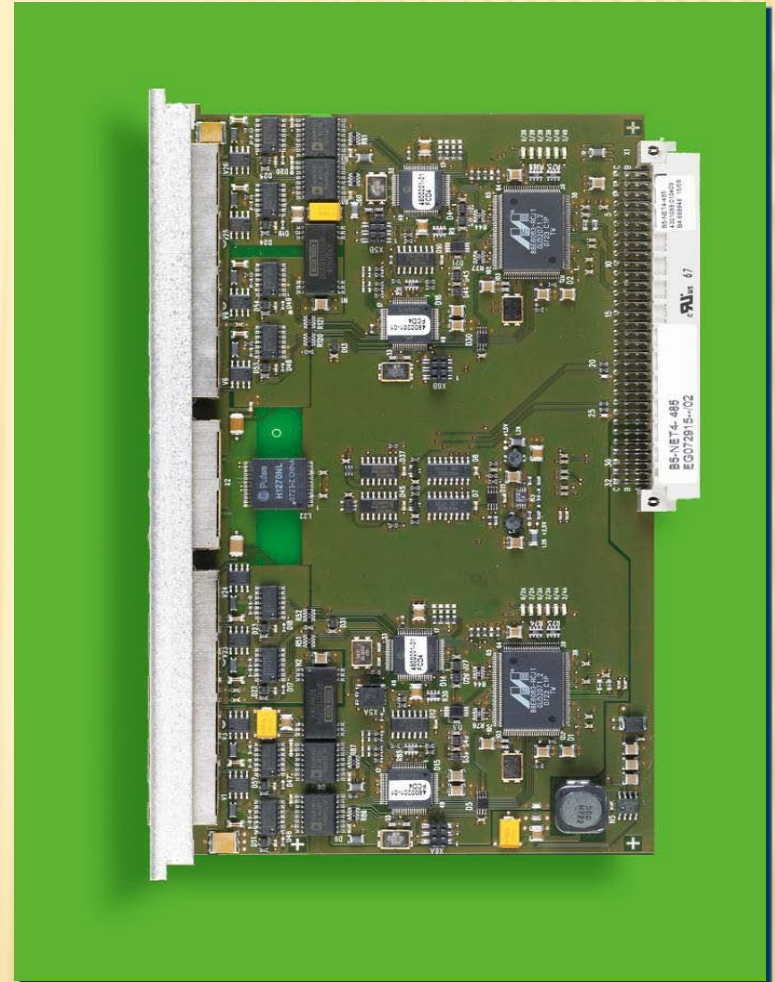


FAS – DOUBLE SECURITY – 100% REDUNDANT

- ✘ Two identical systems work constantly in "Hot-Stand-By-Operation"
- ✘ Not only the microprocessor structure, but all other system structures, components and parts are also duplicated
- ✘ The occurrence of a fault in the active section of the system causes the system to be automatically switched over to the second side of the system and for a system fault to be indicated
- ✘ All functions, such as detection, triggering of alarms, plain text indication and controlling of fire alarm devices etc. remain unaffected



B5-NET4-485 Network Module