

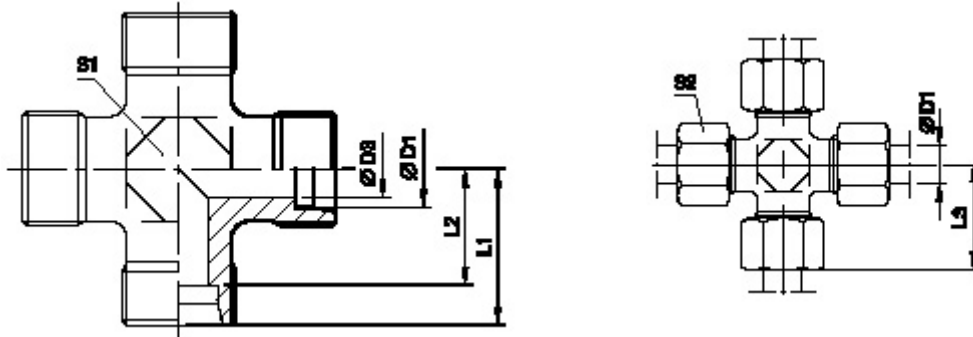
# HYDROTEK ENGINEERS & CONTRACTORS, GHAZIABAD

## K – CROSS(UNION CROSS)

24° CONE END

AVAILABLE IN CARBON STEEL & STAINLESS STEEL.

ALSO AVAILABLE UNEQUAL CROSS ON REQUEST.



SERIES	DIN2353 SPEC.	D1	D3	L1	L2	L3	S1	S2
LL	K04LL	04	3.0	15	11.0	21	9	10
	K06LL	06	4.5	15	9.5	21	9	12
	K08LL	08	6.0	17	11.5	23	12	14
	K10LL	10	8.0	18	12.5	24	12	17
	K12LL	12	10.0	21	13.0	25	14	19
L	K06L	06	4.0	19	12.0	27	12	14
	K08L	08	6.0	21	14.0	29	12	17
	K10L	10	8.0	22	15.0	30	14	19
	K12L	12	10.0	24	17.0	32	17	22
	K15L	15	12.0	28	21.0	36	19	27
	K18L	18	15.0	31	23.5	40	24	32
	K22L	22	19.0	35	27.5	44	27	36
	K28L	28	24.0	38	30.5	47	36	41
	K35L	35	30.0	45	34.5	56	41	50
S	K42L	42	36.0	51	40.0	63	50	60
	K06S	06	4.0	23	16.0	31	12	17
	K08S	08	5.0	24	17.0	32	14	19
	K10S	10	6.0	25	17.5	34	17	22
	K12S	12	8.0	29	21.5	38	17	24
	K14S	14	10.0	30	22.0	40	19	27
	K16S	16	12.0	33	24.5	43	24	30
	K20S	20	16.0	37	26.5	48	27	36
	K25S	25	20.0	42	30.0	54	36	46
K30S	30	25.0	49	35.5	62	41	50	
K38S	38	32.0	57	41.0	72	50	60	