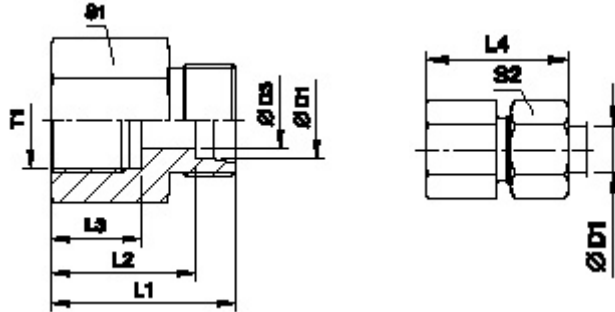


# HYDROTEK ENGINEERS & CONTRACTORS, GHAZIABAD

## GAI – FEMALE CONNECTOR 24° CONE END

AVAILABLE IN CARBON STEEL & STAINLESS STEEL.



SERIES	DIN2353 SPEC.	T BSP/BSPT THREAD	D1	D3	L1	L2	L3	L4	S2	S1
L	GAI06LR	1/8"	06	15	28	12.5	12	28	14	14
	GAI08LR	¼"	08	22	29	14.0	15.5	34	19	22
	GAI10LR	¼"	10	22	31	15.5	18	34	19	22
	GAI12LR	3/8"	12	24	33	17.5	18	39	17	22
	GAI15LR	½"	15	29	35	20	20	46	19	27
	GAI18LR	½"	18	29	36	19.5	20	46	22	32
	GAI22LR	¾"	22	35	44	27	25.5	60	27	36
	GAI28LR	1"	28	43	46	29.5	29	67	36	41
	GAI35LR	1. ¼"	35	53	55	33	34	78	41	55
GAI42LR	1. ½"	42	59	63	40	41.5	88	50	60	
S	GAI06SR	¼"	06	22	31	16	15.5	34	27	17
	GAI08SR	¼"	08	22	31	16	15.5	34	24	19
	GAI10SR	3/8"	10	24	35	18	18	39	27	22
	GAI12SR	3/8"	12	24	35	18	18	39	27	24
	GAI14SR	½"	14	29	40	22	21	46	32	27
	GAI16SR	½"	16	29	40	21.5	21	46	32	32
	GAI20SR	¾"	20	35	50	28.5	28	60	41	36
	GAI25SR	1"	25	43	55	31	31	67	32	46
	GAI30SR	1. ¼"	30	53	63	36.5	36.5	78	50	55
GAI38SR	1. ½"	38	59	72	41	41.5	88	55	60	