

# - for BMS – System Architecture

## Power Gear

1. Air Circuit Breaker
2. Molded Case Circuit Breaker

## Building Automation Products

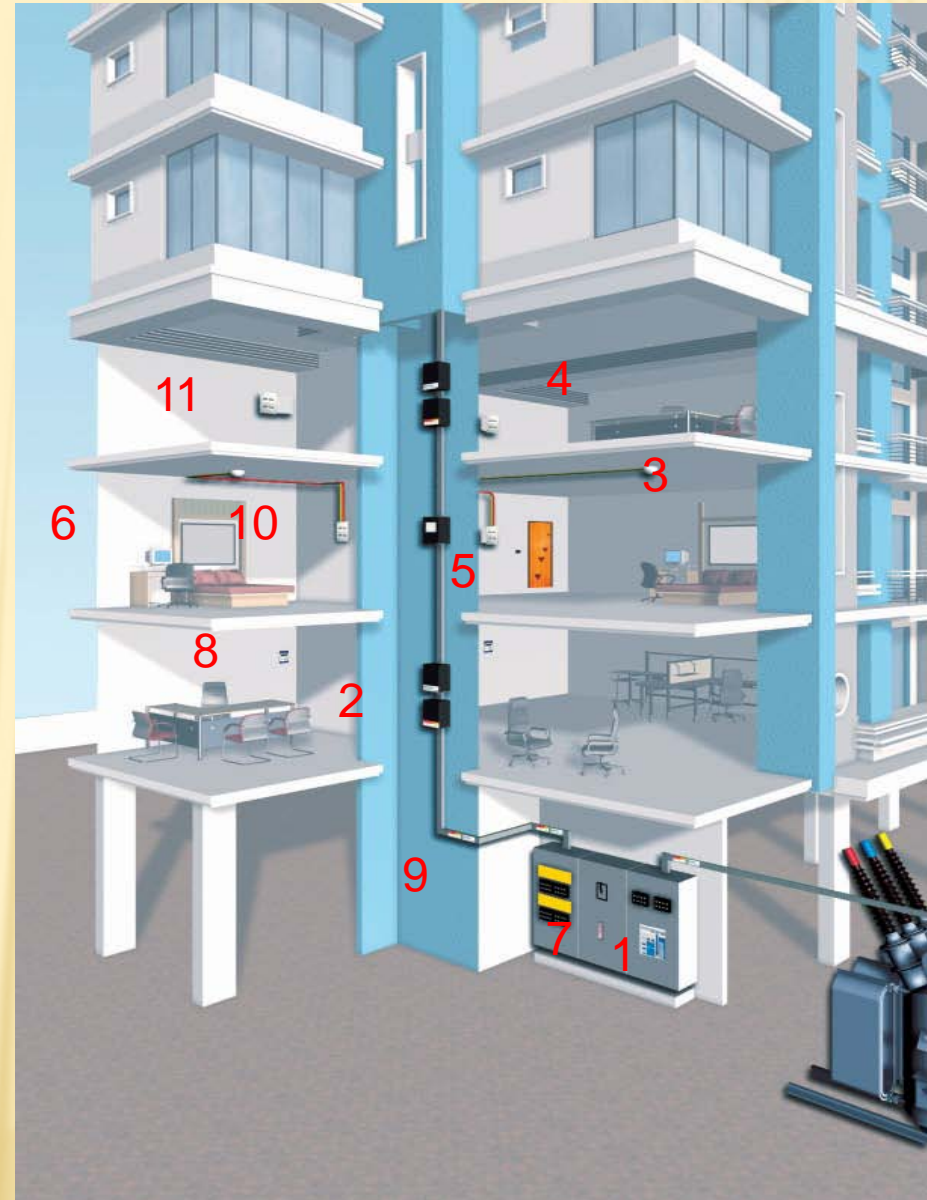
3. Tebis - Home Automation
4. Atmos - HVAC control
5. Login - Access control
6. Powerman - Energy Monitoring System

## Energy & Metering

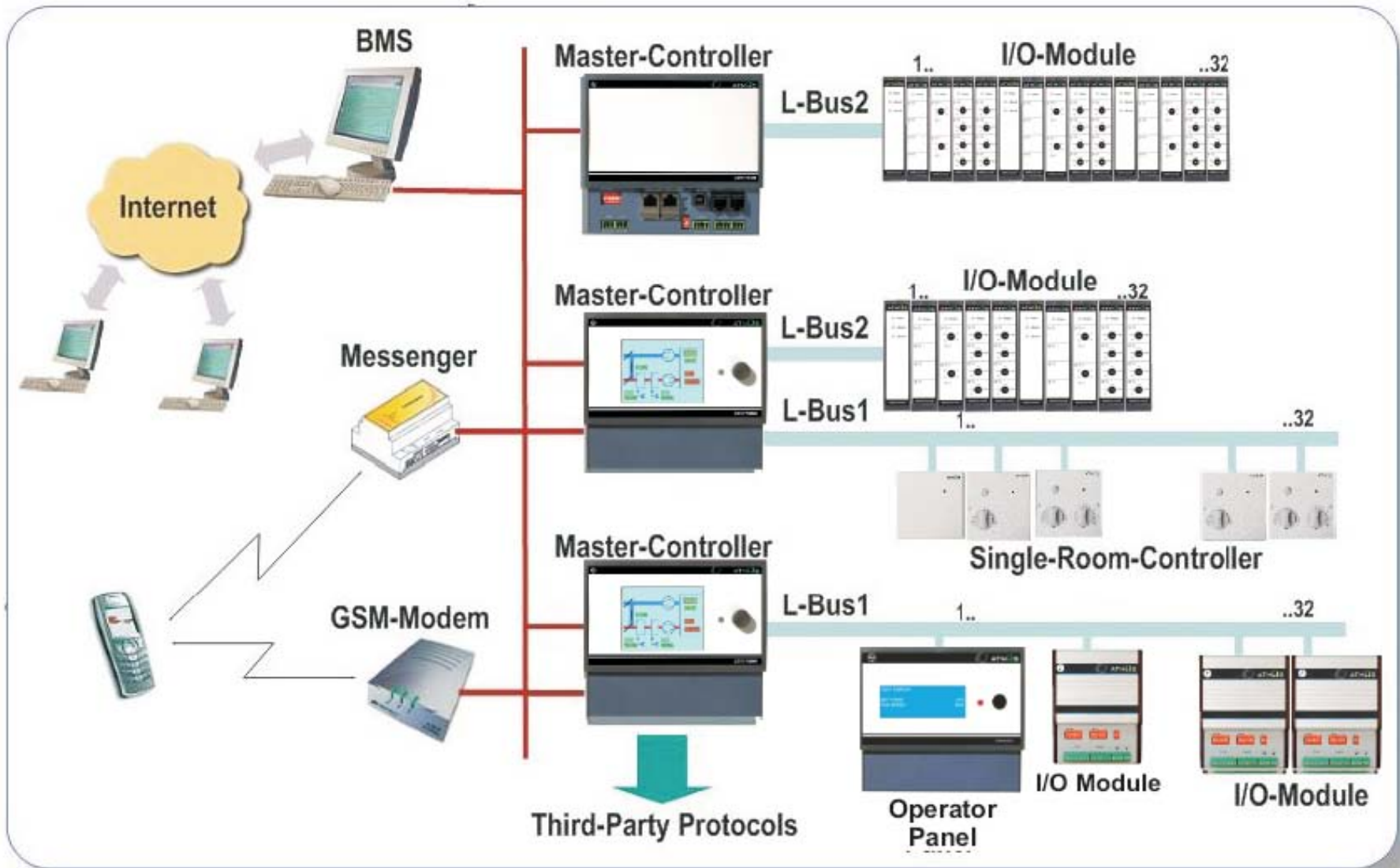
7. Capacitors
8. Energy Meters

## Final Distribution Products

9. Busbar Trunking System
10. Wires
11. Modular Devices (MCB, ELCB, ELMCB, DB)



# FOR BMS – TYPICAL SYSTEM ARCHITECTURE



GE  
Intelligent Platforms



**Control Electric Co. Pvt. Ltd.**  
A-80, Sector 80, Phase-II, Noida-201305 : Mob.No:09818689117  
e-mail:sales@picpanel.com



# TYPICAL SCREENSHOTS

ATMOS

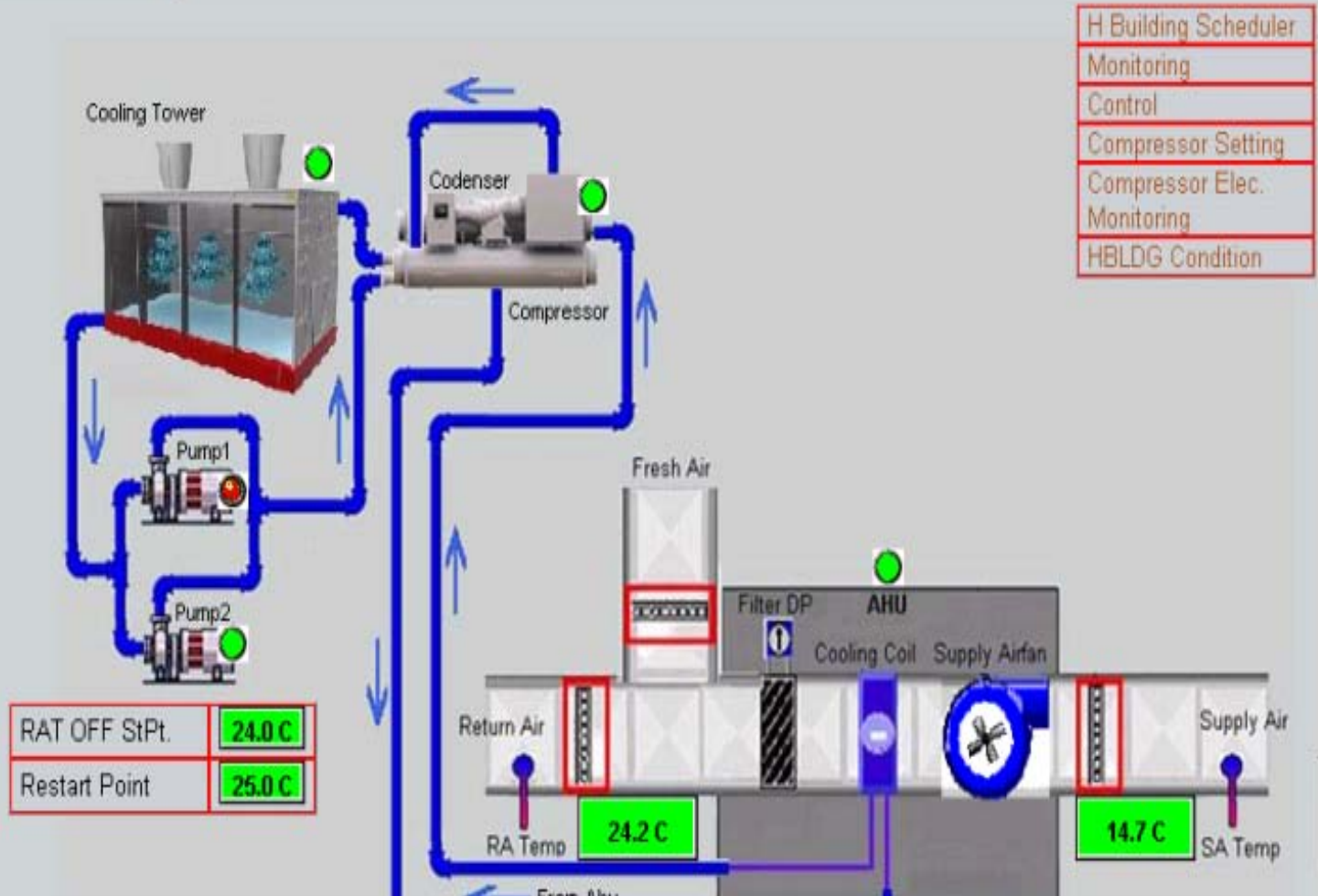
Gate1

- G1 AC Plant (Loc 2)
- NB II ac (Loc 7)
- NB I AC (Loc 9)
- NB I STP(Loc 10)
- E-4 AC Plant (Loc 28)
- EPC (Loc 8)
- D Bldg ac Plants
- C Bldg ac Plants
- RND Bldg ac (Loc 21)
- Gate7
- Gate5
- Graph

E-4 AC Plant (Loc 28)

30-05-2009 10:24:41

E-4 AC Plant (Loc 28)



- H Building Scheduler
- Monitoring
- Control
- Compressor Setting
- Compressor Elec. Monitoring
- HBLDG Condition