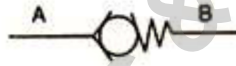


# HYDROTEK ENGINEERS & CONTRACTORS, GHAZIABAD

**CV – CHECK VALVE**  
**WORKING PRESSURE- 300 BAR**  
**AVAILABLE IN CARBON STEEL.**

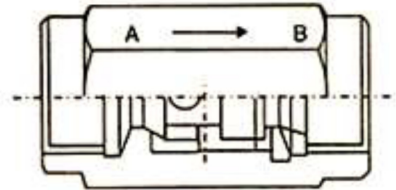


**HYDRAULIC SYMBOL**



**SECTION**

Line mounting valve



MODEL	G BSP
CV 1/4	1/4"
CV3/8	3/8"
CV1/2	1/2"
CV3/4	3/4"
CV1	1'
CV 1.1/4	1.1/4"
CV1.1/2	1.1/2"