

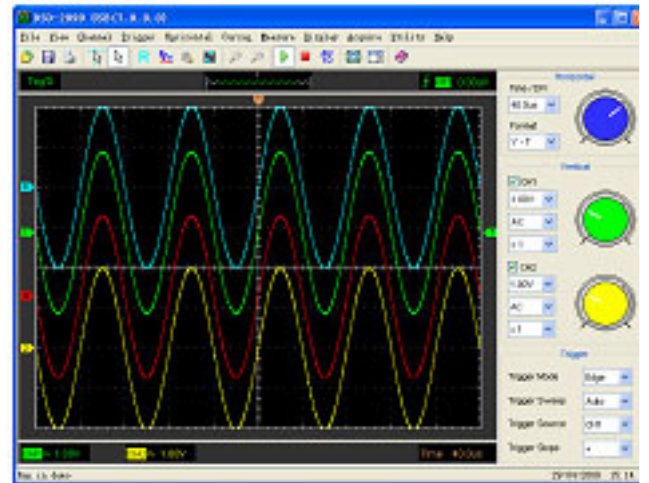
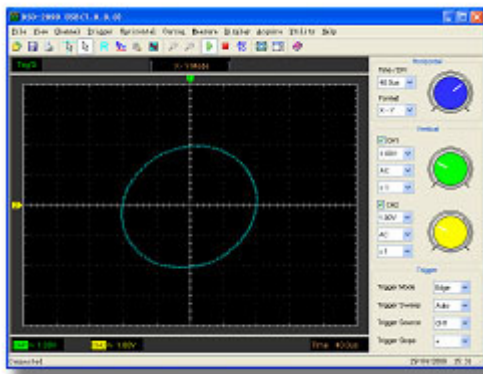
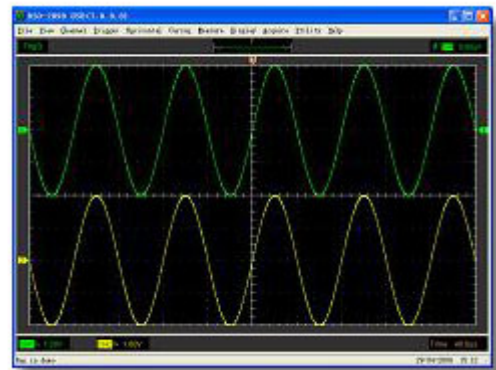
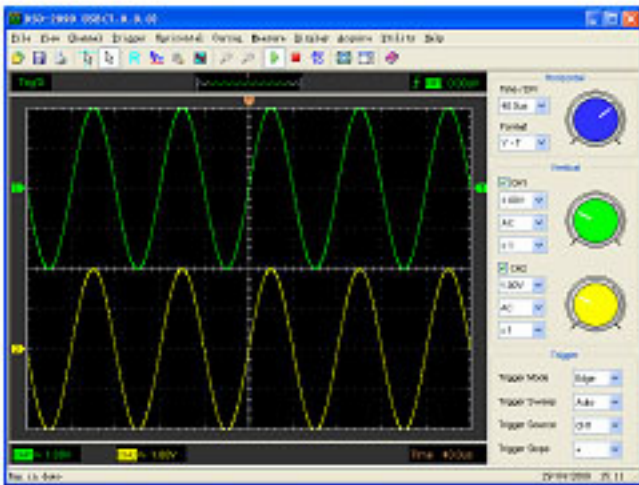
DSO3064 Kit I ,Automotive Diagnostic Oscilloscope

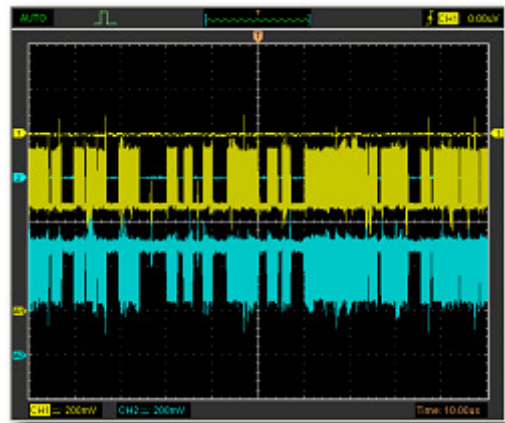
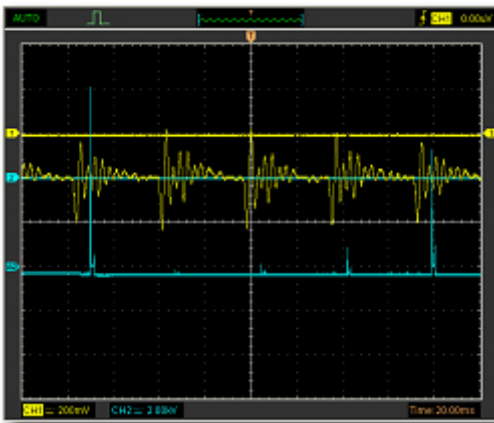
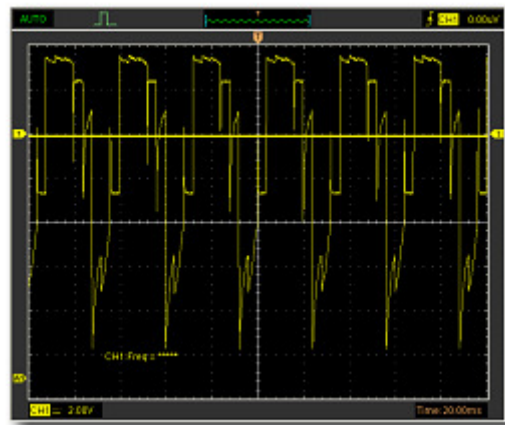
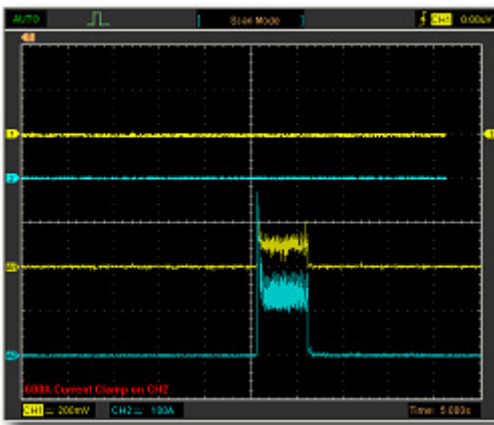
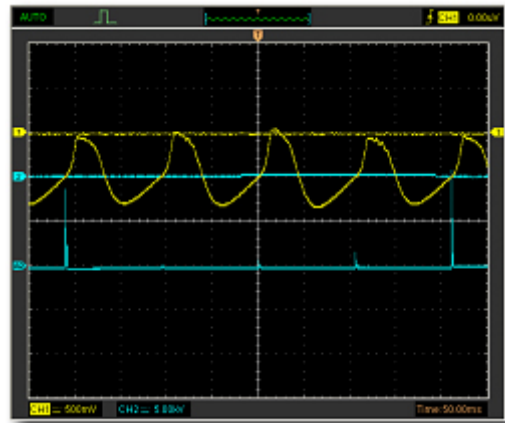
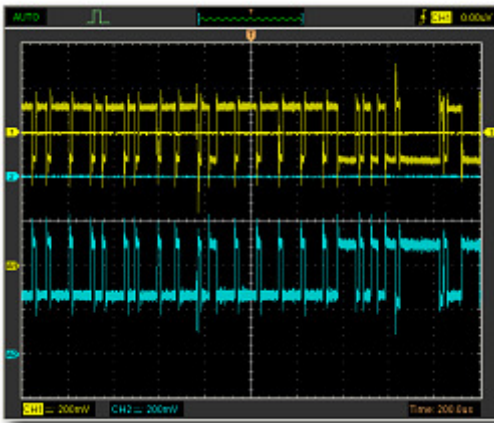
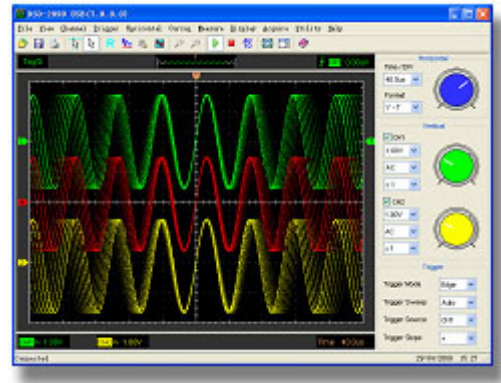
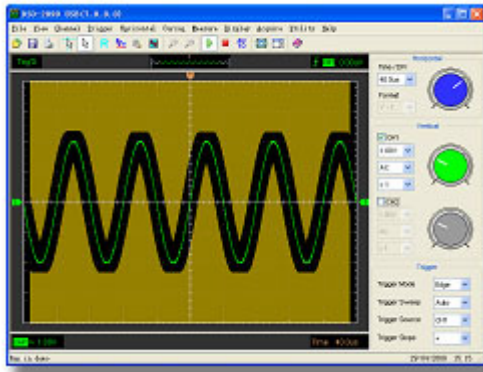
Standard Accessories :

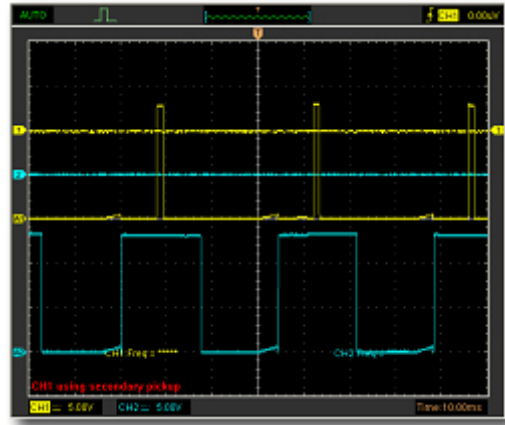
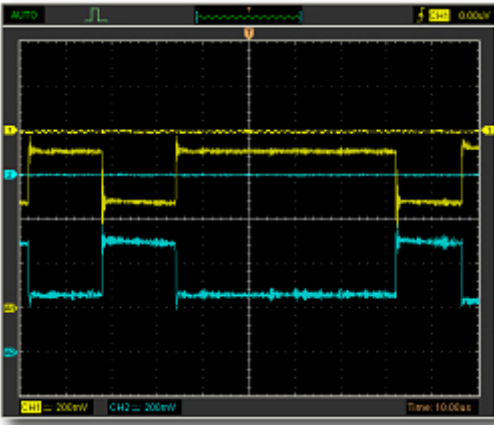




4. Other Pictures:







5. Characteristic

Automotive diagnosis:

- Ignition (primary and secondary)
- Starter and charging circuits
- Lambda, Airflow, knock and MAP sensors
- CAN bus, LIN bus and FlexRay
- Injectors and fuel pumps
- Batteries, alternators and starter motors
- Glow plugs / timer relays

4 Channels and EXT trigger, 60MHz Bandwidth.

200MS/s real-time sampling rate, 10k--16M memory depth per Channel.

Frequency Counter,FFT spectrum analysis.

8--36V Wide range of input voltage,suitable for vehicle power test.

USB 2.0 interface plug and play, LAN and WIFI optional.

More than 20 kinds of automatic measurement function,PASS/FAIL Check function, is suitable for engineering application.

Excellent industrial design, similar interface with bench oscilloscope ,Easy to use.

Software support : Windows NT, Windows 2000, Windows XP ,VISTA,Windows 7 ,

Supply DEMO code (VC,VB,LABVIEW) and technical support.

6. Hardware Specification

SPECIFICATIONS		DSO3064
VERTICAL	Analog Channels	4
	Bandwidth	60MHz(-3dB)
	Rise Time	5.8ns
	Input Impedance	Resistance: 1MΩ ; Capacitance: 25 pF
	Input Sensitivity	10mV/div to 5V/div

	Input Coupling	AC/DC/GND
	Vertical Resolution	8 bits
	Memory Depth	10K-16M/CH
	Maximum Input	300V (DC+AC Peak)
HORIZONTAL	Real-Time Sampling Rate	200MS/s
	Time Base Range	5ns/div to 1000s/div(1-2-5 sequences)
	Time Base Precision	±50ppm
TRIGGER	Source	CH1, CH2,CH3,CH4,EXT
	Mode	Edge,Pulse,Viedo,Alternative
X-Y MODE	X-Axis Input	CH1
	Y-Axis Input	CH2
	Phrase Shift	Max.3 degree
CURSORS AND MEASUREMENT	Voltage Measurement	Vpp, Vamp, Vmax, Vmin, Vtop, Vmid, Vbase, Vavg, Vri Preshoot, Overshoot
	Time Measurement	Frequency,Period, Rise Time, Fall Time, Positive Width Width, Duty Cycle
	Cursors Measurement	Horizontal ,Vertical, Track, Auto Measure Modes
	Waveform Signal Process	+, -, x, ÷, FFT, Invert
AUTO SET		yes
		10mV to 5V/div @ x 1 probe
		100mV to 50V/div @ x 10 probe

VOLTAGE RANGE		1V to 500V/div @ x 100 probe
		10V to 5000V/div @ x 1000 probe
		100V to 50000V/div @ x 10000 probe
		200mV to 100V/div @ 20:1
CURRENT RANGE		CC65(20A),CC65(60A),CC650,CC1100
CORSOR		Time/frequency difference, voltage difference
FFT		Rectangular,Hanning,Hamming,Blackman Window
MATH		Addition,subtraction,multiplication,division
INTERFACE		USB 2.0(Lan ,WIFI Optional)
POWER SOURCE		8--36V Wide range of input voltage,suitable for vehicle
MECHANICS		255 x 190 x 45 (mm)
	Dimension	1Kg
	Weight	AC/DC/GND

7. Software :

Operating system: Windows 2000, Windows XP ,VISTA,Windows 7

8. SecondDesign :

Supply DEMO code (VC、VB、LABVIEW) and technical support.

Auto Ignition Probe HT25

Introduction :

Auto ignition probe is a kind of inductive capacitance sensor, it must match with an oscilloscope

Close to use, can be used to test a spark ignition secondary overlapping wave, overlapping wave parameters, thus achieved the detection, the diagnosis engine ignition position, make each cylinder ignition voltage changing with time directly from the oscilloscope display.

The loot line has three end, a joint meet oscilloscope for BNC use, a for use, a clip grounding to pick high-voltage gleaned clip with. Loot clincher over is a attenuator, used for loot high-pressure attenuation for low pressure, thus protecting oscilloscope not electrify impact.

When used please note:

- (1), test clips shall not directly clip in spark plug, should be caught in the connection of the spark plugs of insulation wire, in order to prevent the breakdown and causing a shock.
- (2), to distance other high-voltage at least 2 inches apart, lest produce interference.
- (3), HT25 leading line length 2 meters 5, the decay of up to 10,000:1.

