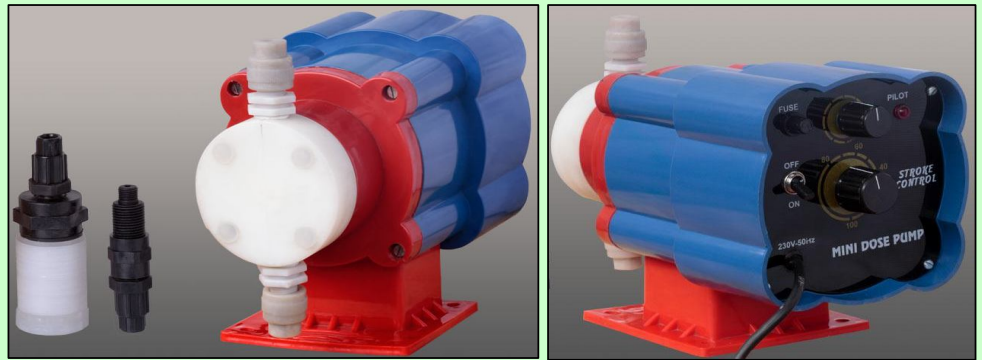


## MINIDOSE



### DUAL CONTROL :

It is a positive displacement diaphragm metering pump operating at 230V 50 Hz supply. It is base mountable. Solenoid pushes the diaphragm which in turn pushes the liquid into the system. Solenoid is actuated by a solid state electronic circuit. It has two controls for the desired accuracy of the dosing

### SALIENT FEATURES :

**Liquid Head & Housing** : An all plastic housing is resistant to corrosive chemical agents. Head & valves etc. all are made of Chemical resistant material for longer & reliable operation.

**Solenoid** : High quality ,hot rated solenoid is designed to dissipate heat. Capacities & pressure do not derate even over extended use.

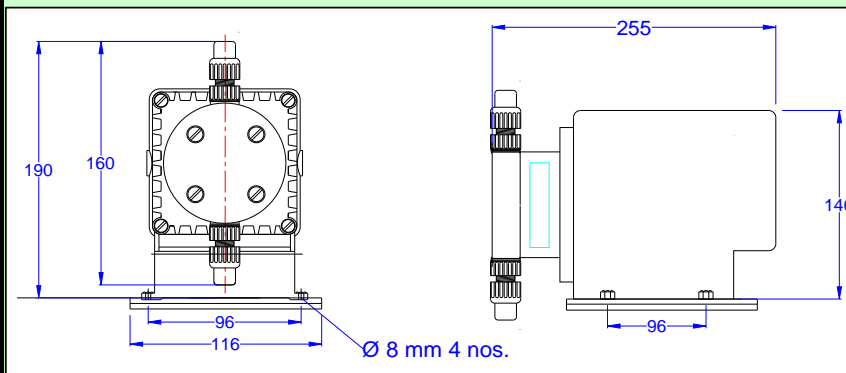
**Diaphragm**: Superior diaphragm is designed to ensure long life even under the most demanding applications. Teflon faced ,metal reinforced diaphragm ensures leak free operation.

**Electronic Circuit** : State of the art electronic circuit (protectively coated with epoxy) is virtually unaffected by temp, EMI & other electric disturbances.

### Controls :

**Stroke Control : 0 - 100 %**

**Pulse Control : 0 - 10 %**



### BOX SIZE IN MM

**350 L X 200 W X 250 H**

**WEIGHT :**

**NET WEIGHT : 3 KG**

**GROSS WEIGHT : 3.270 KG.**

### Applications

Water Chlorination	Water Treatment	Food Processing
Effluent Treatment	Swimming Pools	Brewing & Distillation