



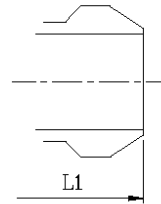
CAST STEEL GATE VALVES – ANSI CLASS 150

DESIGN DESCRIPTION:

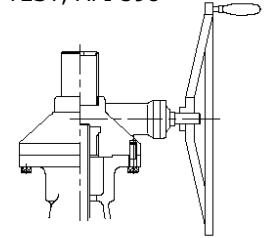
- OUTSIDE SCREW AND YOKE
- BOLTED BONNET
- FLEXIBLE OR SOLID WEDGE, FULLY GUIDED
- RENEWABLE SEAT RINGS
- RISING STEM AND NON-RISING HANDWHEEL
- AVAILABLE WITH GEAR OPERATOR
- FLANGED ENDS
- BUTTWELDING ENDS
- **Note:** All material will be supply along with Test Cum Warranty Certificated for a period of 18 months from the date of shipment from our works or 12 months from the date of commissioning.

APPLICABLE STANDARDS:

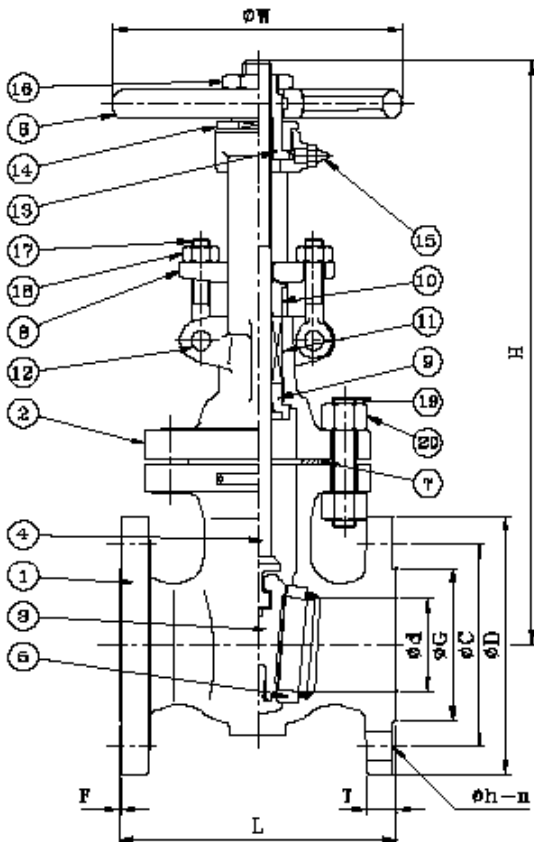
- GATE VALVES, API 600
- CAST STEEL VALVES, ANSI B16.34
- FACE-TO-FACE, ANSI B16.10
- END FLANGES, ANSI B16.5
- BUTTWELDING ENDS, ANSI B16.25
- INSPECTION AND TEST, API 598



Buttwelding Ends



Available With Gear Operator



No.	Parts Name	Materials		
1	Body	A216-WCB	A217-WC6	A352-LCB
2	Bonnet	A216-WCB	A217-WC6	A352-LCB
3	Wedge	A-182 F6 + H/F 13% Cr	A217-WC6+H/F 410	A352-LCB+H/F 410
4	Stem	A276-410		
5	Seat	A-182 F6 + H/F 13% Cr	A182-F11+H/F STL#6	A350-LF2+H/F STL#6
6	Hand Wheel	S.G. Iron / Cast Steel		
7	Gasket	CAF metallic / spiral wound Grafoil Filler		
8	Gland flange	A216-WCB		
9	Bonnet Bush	A276-410		
10	Gland	A276-410		
11	Gland packing	Metallic wire reinforce asbestos / Graphite		
12	Eye Bolt Pin	A276-410		
13	Stem Nut	A439-D2		
14	Retainer Nut	C.S.		
15	Nipple	C.S.		
16	Wheel Nut	C.S.		
17	Eye Bolt	A307 B		
18	Eye Bolt Nut	A194-2H		
19	Bonnet Bolt	A193-B7	A193-B7	A193-B7M
20	Bonnet Bolt Nut	A194-2H	A194-2H	A194-2HM
21	Name Plate	Aluminum		

Other materials are available upon request.

Test Pressure to API 598

	PSIG	
Shell Test (water)	Seat Test (water)	Seat Test (air)
450 (32 kg/cm ²)	314 (22 kg/cm ²)	80 (6 kg/cm ²)

Working Pressure & Temperature Ratings:

-20 to 100 °F	200 °F	300 °F	400 °F	500 °F	600 °F	650 °F	700 °F	750 °F	800 °F
285 psig	260 psig	230 psig	200 psig	170 psig	140 psig	125 psig	110 psig	95 psig	80 psig

Dimension Table:

DN	NB	L	L1	H	H ^(OPEN)	ØW	T	F	ØD	ØC	ØG	Øh	n
50	2"	178	216	343	406	200	15.8	1.6	152.4	120.7	92.0	19.0	4
65	2.1/2"	191	241	413	492	250	17.5	1.6	177.8	139.7	104.7	19.0	4
80	3"	203	282	442	530	250	19.1	1.6	190.5	152.4	127.0	19.0	4
100	4"	229	305	496	612	300	23.9	1.6	228.6	190.5	157.2	19.0	8
150	6"	267	403	640	802	350	25.4	1.6	279.4	241.3	215.9	22.3	8
200	8"	292	419	780	998	350	28.5	1.6	342.9	298.5	269.8	22.3	8
250	10"	330	457	964	1228	400	30.3	1.6	406.4	362.0	323.9	25.4	12
300	12"	356	502	1134	1450	450	31.8	1.6	482.6	431.8	381.0	25.4	12
350	14"	381	572	1384	1745	500	35.1	1.6	533.4	476.3	412.8	28.5	12
400	16"	406	610	1602	2020	600	36.6	1.6	596.9	539.8	469.9	28.5	16
450	18"	432	660	1715	2183	700	39.7	1.6	635.0	577.9	533.4	31.8	16
500	20"	458	711	1974	2488	800	43.0	1.6	698.5	635.0	584.2	31.8	20
600	24"	508	813	2248	2872	900	47.8	1.6	812.8	749.3	692.2	35.0	20

