

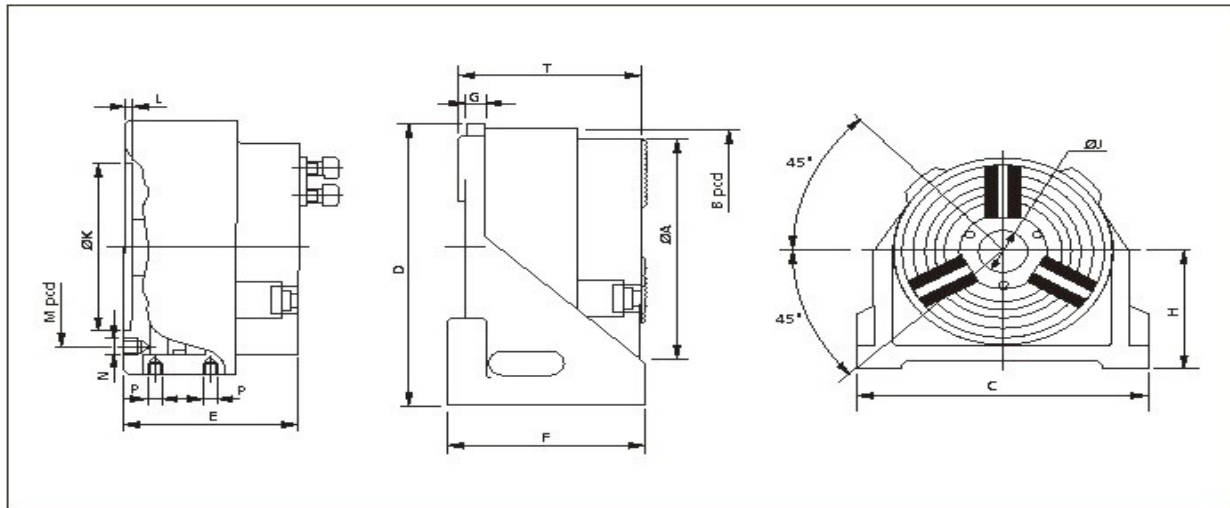
POWER OPERATED STATIONARY CHUCKS



These chucks are exclusively designed for drilling machines, milling machines and vertical CNC machining centers. The compact construction of these machines provides maximum working space, which allows inspection of components in clamped or unclamped positions. These chucks with a built-in cylinder can be operated pneumatically or hydraulically with a flexibility of using either in vertical or horizontal positions.

While a hand operated direction control valve is provided for actuation, a foot operated valve is also supplied for operator convenience.

The total steel construction of the chuck provides maximum strength and rigidity. The hardened and ground sliding parts ensure wear resistance.



Dimensions

Model	PSC 165	PSC 200	PSC 250	PSC 315
A	169	210	254	305
B	235	250	290	340
C	255	270	305	365
D	265	380	325	375
E	200	206	301	335
F	125	140	158	158
G	25	25	30	30
H	135	140	165	187
J(H7)	38	52	68	78
K	140	170	220	220
L	6	6	6	6.5
M	150	180	210	250
N (6 HOLES)	M10 X 14	M10 X 14	M10 X 17	M10 X 17
P (BSP)	1/4"	1/4"	1/4"	1/4"
T	225	231	331	365

Specifications

Model		PSC 165	PSC 200	PSC 250	PSC 315
Chuck size	mm	165	200	250	315
Bore capacity	mm	45	52	68	78
Jaw Movement	mm	2.75	3.7	4.4	5.3
Gripping range External	mm	15 - 107	16 - 119	16 - 250	15 - 300
Internal	mm	-	106 - 228	96 - 227	118 - 253
Max. gripping 2jaw	kgf	3400	5800	6600	8600
force 3jaw	kgf	5100	7800	9900	12900
Weight (approx.)	kg	12.5	21.6	37.7	56.4