

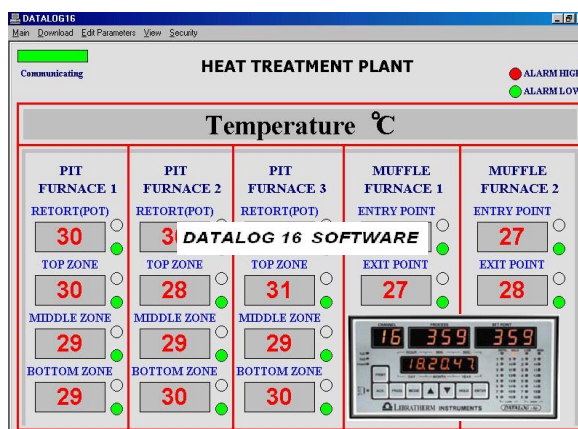
(9) DATA ACQUISITION SOFTWARE

Product Description:

In the era of computerization, the user friendliness and the usability of the computer is very common aspect in the industry. Computers are widely used for the majority of the industrial applications. In order to use the benefit and power of the PC, Libratherm offers standard, customized and dedicated computer programs or the software which runs on the window based operating platform in connection with the various Libratherm make temperature and process controllers, programmers and Data loggers to monitor the online process behavior. Though, various industrial well known SCADA software package also does the similar job of PC interfacing, we still prefer to offer our own dedicated DAS software for the reason of our ability of customization at low cost and modification of the required hardware to meet the end users applications. - when compared to the more SCADA package. The various microprocessor and microcontroller based instruments can be interfaced for communication with the PC on RS232 serial port or RS485 bus having MODBUS RTU or ASCII protocol. Brief description of one of the software is described below:

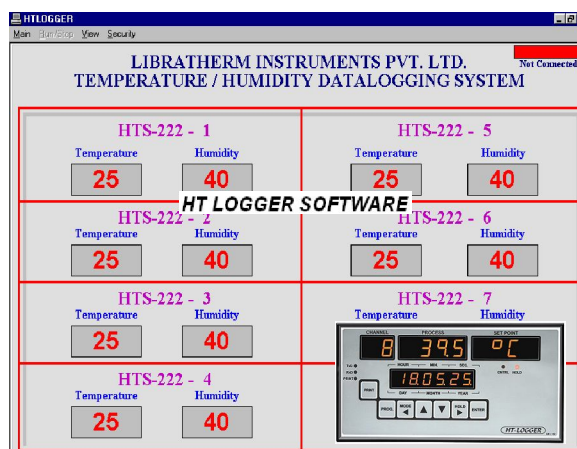
DATALOG16 software:-

Designed to interface with our data logger **DATALOG-16**, monitors and displays the process value of all 16 channels – which are updated every 1 second. Facility to view the real time line graph of the process values, where user can select or deselect the channel, can zoom in or zoom out with auto scaling of x or y co-ordinates, the data base is created in back ground which can also be seen in the tabular format with real time and date. The records can be easily searched by date, time or by the customized and user selectable field. The software can be customized to group the monitoring of single or multiples systems with suitable identifications.



HTLOGGER software:-

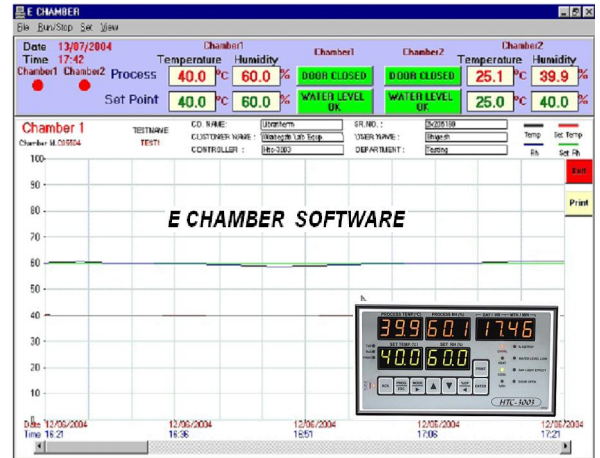
Designed to interface with our **HT LOGGER**, monitors and displays the temperature and humidity values at 8 different locations, which are updated every 1 second. Facility to view the real time line graph of both temperature and humidity values, can zoom in or zoom out with auto scaling of x or y co-ordinates, the data base is created in back ground which can also be seen in the tabular format with real time and date. The records can be easily searched by date, time or by the customized and user selectable field. The software can be



customized to group the monitoring of single or multiples systems with suitable identifications. This computerized data logging system is suitable for validation of stability or environmental or walk-in chamber, cold storage rooms in Pharma, food, petroleum and other industries.

ECHAMBER software:-

Designed to interface with our controller **HTC-3003, HTC-3000** to control temperature and humidity of the stability chambers. The software allows user to monitor the temp. and humidity values on the screen, user can feed the PID, Set Point and Program values through the computer keyboard, one can view the real time values in graphical format which can be zoomed or scaled as per the requirement. Database can be searched with date and time or other user defined fields. Software can be customized to monitor more than one stability chamber on a single screen, selection options are provided to the user. Software can also be supplied to comply with 21 CFR PART 11 requirements.



EPRC software:-

Designed to interface with our controller **PRC-8000** to control the temperature of eight heating zones. The software allows user to monitor the on line temp. of all eight zones on the screen, user can program the ramp and soak profile for each zone, feed the PID, Set Point and Program values or start and stop the profile through the computer keyboard, one can also view the real time values in graphical format which can be zoomed or scaled as per the requirement. Database can be searched with date and time or other user defined fields. Software can be customized to monitor more than one PRC-8000 on a single screen, selection options are provided to the user.

