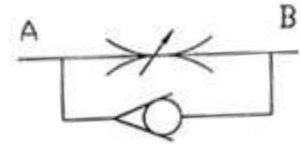
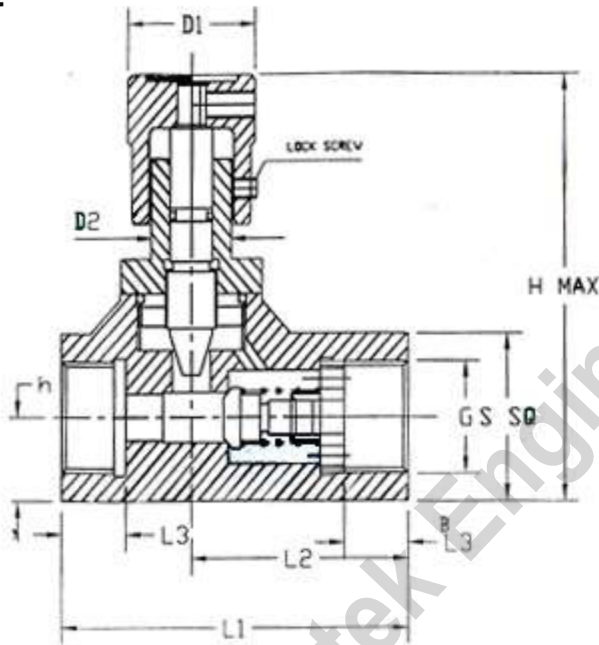


HYDROTEK ENGINEERS & CONTRACTORS, GHAZIABAD

FCV – FLOW CONTROL VALVE/THROTTLE & CHECK VALVE
WORKING PRESSURE-350 BAR
AVAILABLE IN CARBON STEEL



MODEL	G BSP	D1	D2	L1	S
FT ¼	¼"	24	18	68	25
FT 3/8	3/8"	27	22	72	30
FT 1/2	½"	32	22	85	38
FT 3/4	¾"	38	22	95	46
FT 1	1'	45	29	120	50