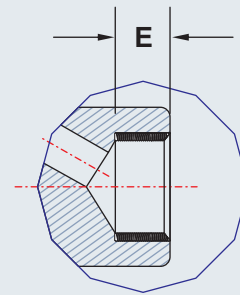


CROSS SECTION



SCREWED ENDS

DIMENSIONS

SOCKET WELD / SCREWED - 800#

SIZE	A	B	E	Ø G	H	Ø J
15	85	10	13	9.5	150	78
20	90	13	13	12.7	165	78
25	105	13	15	17.5	185	100
40	128	15	25	28.6	239	142
50	142	16	25	36.5	248	142

PRODUCT RANGE : 15 MM TO 50 MM

TECHNICAL DATA

- CONSTRUCTION** : FORGED CARBON STEEL, GLOBE VALVE, 800#, OUTSIDE SCREW & YOKE TYPE, BOLTED BONNET WITH BACK SEAT
- DESIGN & MFG. STD.:** BS 5352
- INSPECTION & TESTING STD. :** API 598
- END TO END :** ANSIB 16.10 (AS SHOWN)
- END CONNECTION :** ANSIB 16.11
 A. SCREWED - BSP, BSPT, NPT
 B. SOCKET WELD

TEST PRESSURE (psig / kg/cm²)

TESTING	BODY	SEAT
HYDRAULIC	3000 / 211	2000 / 140
PNEUMATIC	---	100 / 7

BILL OF MATERIALS

NO.	QTY.	NOMENCLATURE	MATERIAL
1	1	BODY	FS - ASTM A 105
2	1	BONNET	FS - ASTM A 105
3	1	SEAT RING	AISI 410 (13% Cr.)
4	1	DISC	AISI 410 (13% Cr.)
5	1	STEM	AISI 410 (13% Cr.)
6	1	GLAND BUSH	AISI 410 (13% Cr.)
7	1	GLAND FLANGE	ASTM A 105
8	1	YOKE SLEEVE & NUT	NI - RESIST. / ASTM A 439 GR. D2 / AL - BRONZE
9	1	BODY - BONNET GASKET	SPIRAL WOUND SS 304 / 316 WITH CAF / GRAPHOIL
10	-	GLAND PACKING	GRAPHITED ASBESTOS & INCONEL WIRE REINFORCED / GRAPHOIL
11	4 SETS	BONNET STUD & NUT	ASTM A 193 Gr. B7 ASTM A 194 Gr. 2H
12	2 SETS	EYE BOLT & NUT	FORGED CS / B7 & 2H
13	2 SETS	SCREW & WASHER	M.S. GALVANISED
14	1	HAND WHEEL	CAST IRON / C.S.
15	1	HAND WHEEL NUT	CARBON STEEL

OTHER OPTIONS ON REQUEST:

- OTHER MATERIALS OF CONSTRUCTION
- STELLITE ON DISC / SEAT
- VALVE WITH FLANGES WELDED AT ENDS, 150#, 300#.

VENUS FITTINGS & VALVES PVT. LTD.



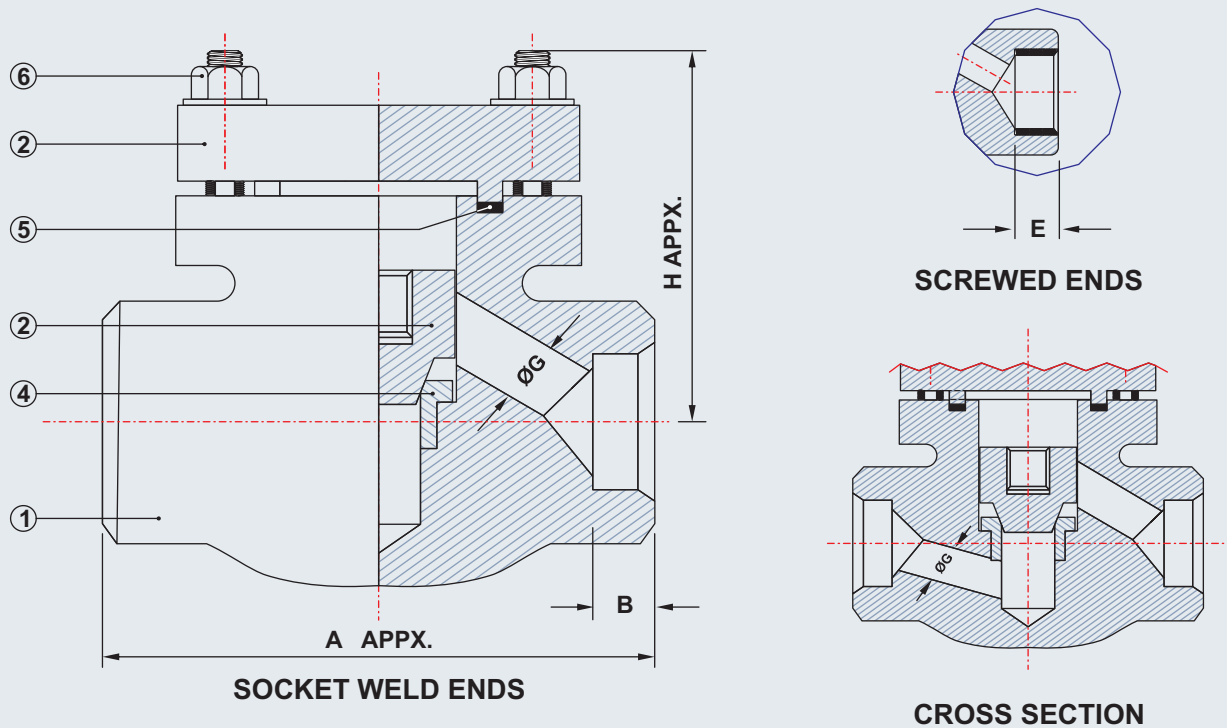
MUMBAI OFFICE
 897/911, John Roberts' Compound,
 Sewri-Fort Road, Sewri (East),
 Mumbai 400 015, Maharashtra (India).
 Phone : (91-22) 2412 3151 / 2412 7006 Fax : (91-22) 2413 5576
 E-mail : vfv@vsnl.net Website : www.vfv.com

AHMEDABAD OFFICE
 8E, Sumeru Centre, Near Parimal Rly. Crossing, Paldi,
 Ahmedabad 380 007, Gujarat (India).
 Phone : (91-79) 2663 2754 / 2663 8877
 Fax : (91-79) 2663 2754

WORKS
 Sub Plot No. 1/2, Natraj Industrial Estate,
 Village Wasna - Iyawa, Taluka - Sanand,
 Dist. Ahmedabad 382 110, Gujarat (India).
 Phone : (91-2717) 284392

GLOBE VALVE, 800#

All dimensions are in mm



PRODUCT RANGE : 15 MM TO 50 MM

TECHNICAL DATA

1. CONSTRUCTION : FORGED CARBON STEEL, CHECK VALVE, 800#, OUTSIDE SCREW & YOKE TYPE, BOLTED BONNET WITH BACK SEAT
2. DESIGN & MFG. STD.: BS 5352
3. INSPECTION & TESTING STD. : API 598
4. END TO END : ANSI B 16.10 (AS SHOWN)
5. END CONNECTION : ANSI B 16.11
 - A. SCREWED - BSP, BSPT, NPT
 - B. SOCKET WELD

BILL OF MATERIALS

NO.	QTY.	NOMENCLATURE	MATERIAL
1	1	BODY	FS - ASTM A 105
2	1	COVER	FS - ASTM A 105
3	1	DISC	AISI 410 (13% Cr.)
4	1	SEAT RING	AISI 410 (13% Cr.)
5	1	BODY - COVER GASKET	SPIRAL WOUND S.S 304 WITH CAF
6	4 SETS	COVER STUD & NUT	ASTM A 193 Gr. B7 ASTM A 194 Gr. 2H

TEST PRESSURE (psig / kg/cm²)

TESTING	BODY	SEAT
HYDRAULIC	3000 / 211	2000 / 140
PNEUMATIC	---	100 / 7

DIMENSIONS

SOCKET WELD / SCREWED - 800#					
SIZE	A	B	E	Ø G	H
15	85	10	13	9.0	50
20	90	13	13	12.7	62
25	105	13	15	17.5	68
40	128	15	25	28.6	100
50	142	16	25	36.5	100

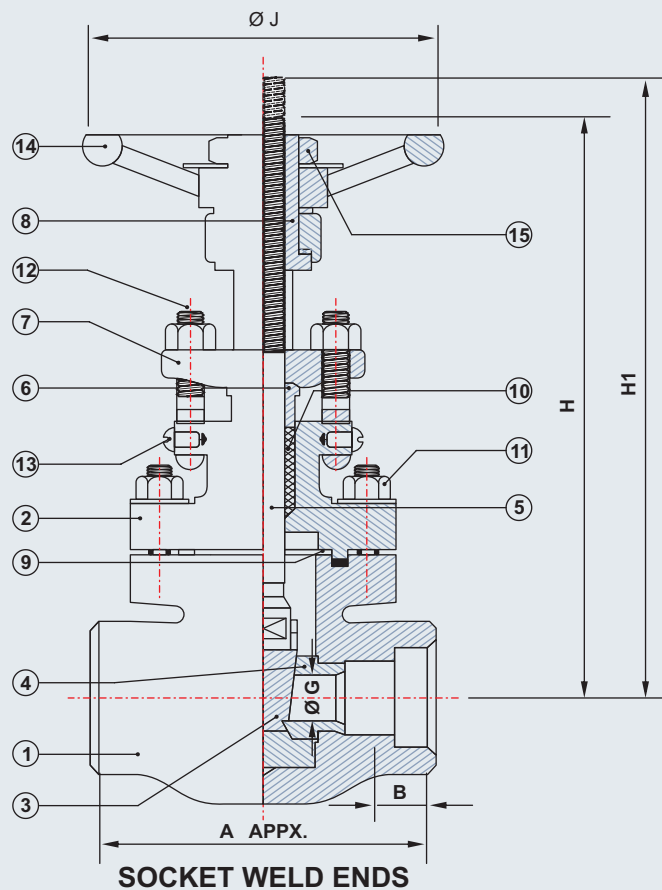
OTHER OPTIONS ON REQUEST:

1. OTHER MATERIALS OF CONSTRUCTION
2. STELLITE ON DISC / SEAT
3. VALVE WITH FLANGES WELDED AT ENDS, 150#, 300#.

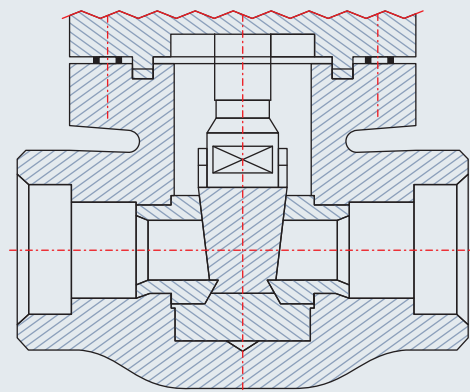
VENUS FITTINGS & VALVES PVT. LTD.



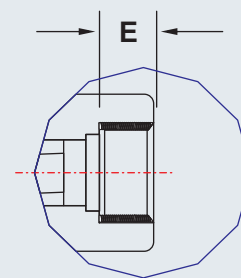
MUMBAI OFFICE 897/911, John Roberts' Compound, Sewri-Fort Road, Sewri (East), Mumbai 400 015, Maharashtra (India). Phone : (91-22) 2412 3151 / 2412 7006 Fax : (91-22) 2413 5576 E-mail : vfv@vsnl.net Website : www.vfv.com	AHMEDABAD OFFICE 8E, Sumeru Centre, Near Parimal Rly. Crossing, Paldi, Ahmedabad 380 007, Gujarat (India). Phone : (91-79) 2663 2754 / 2663 8877 Fax : (91-79) 2663 2754	WORKS Sub Plot No. 1/2, Natraj Industrial Estate, Village Wasna - Iyawa, Taluka - Sanand, Dist. Ahmedabad 382 110, Gujarat (India). Phone : (91-2717) 284392	CHECK VALVE, 800# All dimensions are in mm
--	---	---	--



SOCKET WELD ENDS



CROSS SECTION



SCREWED ENDS

DIMENSIONS

SOCKET WELD / SCREWED - 800#

SIZE	A	B	E	H	H1	Ø J
15	85	10	13	154	174	94
20	90	13	13	160	185	94
25	105	13	15	168	198	98
40	128	15	25	231	274	142
50	142	16	25	242	287	142

PRODUCT RANGE : 15 MM TO 50 MM

TECHNICAL DATA

1. **CONSTRUCTION** : FORGED CARBON STEEL, GATE VALVE, 800#, OUTSIDE SCREW & YOKE TYPE, BOLTED BONNET WITH BACK SEAT
2. **DESIGN & MFG. STD.:** BS 5352
3. **INSPECTION & TESTING STD. :** BS 6755
4. **END TO END :** ANSI B 16.10 (AS SHOWN)
5. **END CONNECTION :** ANSI B 16.11
 A. SCREWED - BSP, BSPT, NPT
 B. SOCKET WELD

TEST PRESSURE (psig / kg/cm²)

TESTING	BODY	SEAT
HYDRAULIC	3000 / 211	2000 / 140
PNEUMATIC	---	100 / 7

BILL OF MATERIALS

NO.	QTY.	NOMENCLATURE	MATERIAL
1	1	BODY	FS - ASTM A 105
2	1	BONNET	FS - ASTM A 105
3	1	WEDGE	AISI 410 (13% Cr.)
4	1	SEAT RING	AISI 410 (13% Cr.)
5	1	STEM	AISI 410 (13% Cr.)
6	1	GLAND BUSH	AISI 410 (13% Cr.)
7	1	GLAND FLANGE	ASTM A 105
8	1	YOKE SLEEVE & NUT	NI - RESIST. / ASTM A 439 GR. D2 / AL - BRONZE
9	1	BODY - BONNET GASKET	SPIRAL WOUND SS 304 / 316 WITH CAF / GRAPHOIL
10	-	GLAND PACKING	GRAPHITED ASBESTOS & INCONEL WIRE REINFORCED / GRAPHOIL
11	4 SETS	BONNET STUD & NUT	ASTM A 193 Gr. B7 ASTM A 194 Gr. 2H
12	2 SETS	EYE BOLT & NUT	FORGED CS / B7 & 2H
13	2 SETS	SCREW & WASHER	M.S. GALVANISED
14	1	HAND WHEEL	CAST IRON / C.S.
15	1	HAND WHEEL NUT	CARBON STEEL

OTHER OPTIONS ON REQUEST:

1. OTHER MATERIALS OF CONSTRUCTION
2. STELLITE ON WEDGE / SEAT
3. VALVE WITH FLANGES WELDED AT ENDS, 150#, 300#.

VENUS FITTINGS & VALVES PVT. LTD.



MUMBAI OFFICE
 897/911, John Roberts' Compound,
 Sewri-Fort Road, Sewri (East),
 Mumbai 400 015, Maharashtra (India).
 Phone : (91-22) 2412 3151 / 2412 7006 Fax : (91-22) 2413 5576
 E-mail : vfv1@vsnl.net Website : www.vfvl.com

AHMEDABAD OFFICE
 8E, Sumeru Centre, Near Parimal Rly. Crossing, Paldi,
 Ahmedabad 380 007, Gujarat (India).
 Phone : (91-79) 2663 2754 / 2663 8877
 Fax : (91-79) 2663 2754

WORKS
 Sub Plot No. 1/2, Natraj Industrial Estate,
 Village Wasna - Iyawa, Taluka - Sanand,
 Dist. Ahmedabad 382 110, Gujarat (India).
 Phone : (91-2717) 284392

GATE VALVE, 800#

All dimensions are in mm