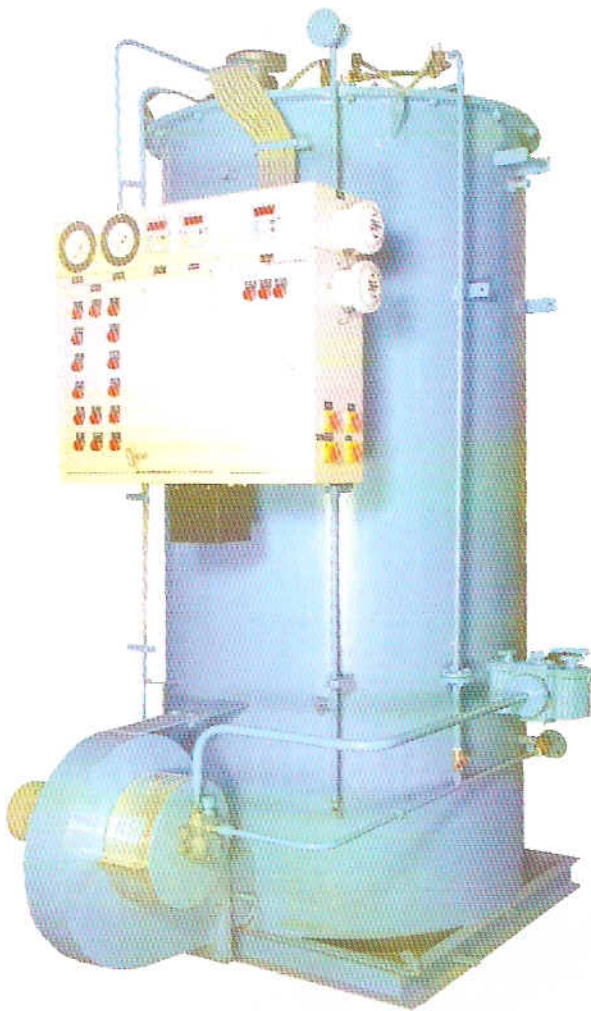


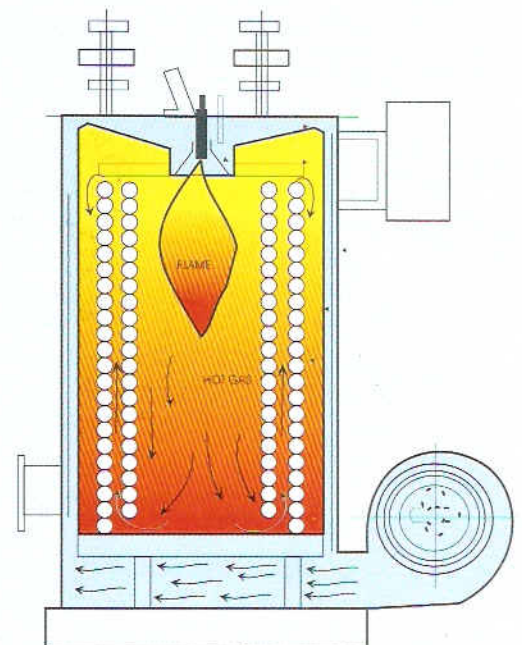
AQUAWARM - A

THREE PASS COIL TYPE OIL / GAS
FIRED PRESSURIZED / NON-PRESSURIZED
HOT WATER GENERATOR



Salient features:

- ❑ Record thermal efficiency of 86% on G.C.V. of fuel and 93% on N.C.V. of fuel
- ❑ Robust and reliable
- ❑ Easy maintenance
- ❑ No running attention needed
- ❑ Exempted from boiler office formalities
- ❑ 80% depreciation in first year



Construction Schematic

TECHNICAL SPECIFICATIONS

Detail		Unit	Models								
			50	100	200	300	400	500	600	800	1000
Heat output		kcal/hr	50000	100000	200000	300000	400000	500000	600000	800000	1000000
Maximum operating temperature at the outlet of the unit	Non-Pressurized	°C	← 90 →								
	Pressurized	°C	← 140 →								
Thermal Efficiency	Based on G.C.V. Of Fuel	%	← 86±1 →								
	Based on N.C.V. of Fuel	%	← 93±1 →								
Fuel**	H.S.D.	kg/hr	5.33	10.67	21.24	32	42.67	53.34	64.01	85.34	106.68
Consumption	L.D.O.	kg/hr	5.43	10.87	21.73	32.6	43.47	54.34	65.2	86.94	108.67
For rated	F.O.	kg/hr	-	-	22.8	34.2	45.6	57	68.4	91.2	114
Heat output (Based on G.C.V. Of Fuel)	L.P.G.	kg/hr	5.1	10.2	20.4	30.6	40.8	51	61.2	81.6	102
	P.N.G.	kg/hr	4.84	9.69	19.38	29.07	38.76	48.45	58.14	77.52	96.9
Burner control			← ON - OFF →					← HIGH-LOW →			
Electric supply			← 415 V±5%, 50Hz, 3 Phase, 4 Wire →								
Circulation pump motor****	H.P./kw		2/1.49	3 / 2.24	3 / 2.24	5 / 3.73	5/3.73	7.5 / 5.59	7.5/5.59	10/7.46	10/7.46
Blower motor	H.P./kw		1/0.75	1/0.75	1.5/1.12	1.5/1.12	3/2.24	5/3.73	5/3.73	5/3.73	5/3.73
Fuel preheater (For Operation on F.O)		kw	-	-	3	4.5	4.5	4.5	6	7.5	9
Total Connected Electrical Load	H.S.D.	kw	2.24	2.99	3.36	4.85	5.97	9.32	9.32	11.19	11.19
	L.D.O.	kw	2.24	2.99	3.36	4.85	5.97	9.32	9.32	11.19	11.19
Normal Consumption	F.O.	kw	-	-	6.36	9.35	10.47	13.82	15.32	18.69	20.19
	L.P.G.	kw	2.24	2.99	3.36	4.85	5.97	9.32	9.32	11.19	11.19
Overall dimensions	P.N.G.	kw	2.24	2.99	3.36	4.85	5.97	9.32	9.32	11.19	11.19
	H.S.D.	kw	1.79	2.39	2.69	3.88	4.78	7.46	7.46	8.95	8.95
Normal Consumption	L.D.O.	kw	1.79	2.39	2.69	3.88	4.78	7.46	7.46	8.95	8.95
	F.O.	kw	-	-	5.09	7.48	8.38	11.06	12.26	14.95	16.15
Overall dimensions	L.P.G.	kw	1.79	2.29	2.69	3.88	4.78	7.46	7.46	8.95	8.95
	P.N.G.	kw	1.79	2.29	2.69	3.88	4.78	7.46	7.46	8.95	8.95
Dry weight (approx.)	Length	mm	1500	1500	1750	2300	2300	2300	2500	2500	3000
	Width	mm	800	1000	1200	1600	1600	1600	1750	1750	2250
	Height	mm	1400	1750	2250	1800	2200	2505	2700	2800	3250
Flue gas outlet size (Dia.)		mm	200	200	200	250	250	250	250	300	350

Please note:

** The fuel consumption figures are tentative. The actual operational figures will depend on

The actual Gross Calorific Value (G.C.V.) of the fuel as specified in the Fuel Supplier's Test Certificate.

**** The ΔT of water (difference between output water temperature and return water temperature) considered for circulation is 20°C.

**** The head available at the outlet of the unit will be 15 m WC.

Contact Us-

ELITE THERMAL ENGINEERS PVT. LTD.

Head Office : 3/4, Jayagandha Annexe, Ram Maruti Road, Opp. Dr.Paranjape's Eye Hospital, Naupada,
Thane (W) - 400 602 Maharashtra (INDIA)
Tel. : 91-22-2533 1807(3 Lines) Fax : 91-22-2533 3069
E-mail : sales@eliteboilers.com, elitethermal@vsnl.net

Branch Office : C-Wing, Hall No.2, Shree Balwant Niwas, 1846/47, Sadashiv Peth,
Pune - 411 030. Maharashtra (INDIA)
Tel. : 91-20-2449 1746, 2449 3553 Fax : 91-20-2449 1769
E-mail : sales@eliteboilers.com, elite_thermal@vsnl.com

In view of our constant endeavors to improve the quality of our products, we reserve the rights to alter or change the specifications without prior notice.

VISIT US AT : www.eliteboilers.com

©Elite Thermal Engineers Pvt. Ltd.