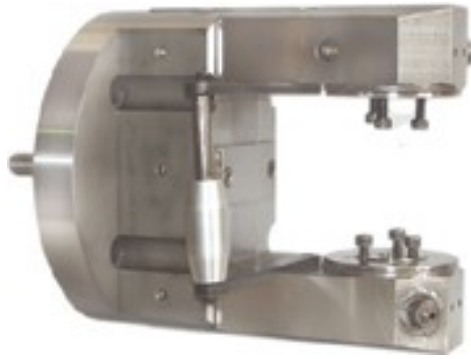


MANUAL INDEXING CHUCK



These manual indexing chucks with power clamping are suitable for machining jobs at 90°, 120°, 180° or any other angle in one clamping. Once the job is clamped, the operator only has to pull and push a lever to index for the next operation. The job need not be de-clamped for indexing. The jaw pads are designed to suit the shape of the component.

These chucks are ideal for machining automobile transmission cross, hydraulic fittings and valve bodies.

Dimensions :-

| Model | | ICM 140 | ICM 160 | CM 180 | ICM 220 | ICM 250 | ICM 300 | ICM 350 | ICM 400 |
|--------------------------|---|---------|---------|---------|---------|---------|---------|---------|---------|
| Chuck dia | A | 140 | 160 | 180 | 220 | 250 | 300 | 350 | 400 |
| Registered dia. H7 | B | 68 | 68 | 80 | 130 | 145 | 160 | 200 | 200 |
| Registered depth | C | 5 | 5 | 6 | 7 | 7 | 7 | 8 | 9 |
| Height of the chuck | D | 147 | 170 | 197 | 225 | 257 | 317 | 398 | 473 |
| Height of the chuck body | E | 77 | 85 | 95 | 105 | 113 | 135 | 165 | 190 |
| Pitch circle dia. | F | 110 | 125 | 140 | 170 | 200 | 230 | 270 | 325 |
| Chuck holding-No x dia. | G | 2 X M12 | 4 X M12 | 4 X M12 | 4 X M16 | 4 X M20 | 4 X M24 | 4 X M30 | 4 X M30 |
| Thread length | H | 18 | 18 | 18 | 25 | 30 | 35 | 45 | 50 |
| Movement of | J | 10 | 12 | 14 | 15 | 17 | 20 | 23 | 34 |

| | | | | | | | | | |
|-----------------------------|-----|------|------|------|------|------|------|------|------|
| each jaw | | | | | | | | | |
| Chucking range-Min | K | 58 | 59 | 72 | 96 | 112 | 145 | 182 | 215 |
| -Max | | 78 | 83 | 100 | 126 | 146 | 185 | 228 | 284 |
| Swing dia. | L | 100 | 120 | 150 | 180 | 220 | 280 | 350 | 430 |
| Projection beyond | | | | | | | | | |
| Indexing axis | M | 20 | 25 | 30 | 36 | 42 | 52 | 68 | 76 |
| Hieght of jaws. | N | 38.5 | 48 | 50 | 58 | 64 | 73 | 78 | 85 |
| Hieght of false jaws. | O | 77.5 | 89 | 100 | 121 | 137 | 165 | 192 | 227 |
| Dia. of false jaws(Normal) | P | 45 | 60 | 80 | 100 | 120 | 150 | 220 | - |
| Outer position of main jaws | Q | 77.5 | 89 | 100 | 121 | 137 | 165 | 192 | 227 |
| Dimension | R | 57 | 71 | 85 | 106 | 120 | 154 | 200 | 253 |
| Draw bolt-thread dia. | S | M12 | M14 | M16 | M16 | M20 | M24 | M24 | M24 |
| -thread lenght | T | 22 | 28 | 38 | 38 | 45 | 50 | 50 | 61 |
| Nut -dia. | U | 20 | 24 | 40 | 40 | 50 | 60 | 60 | 60 |
| -lenght | V | 8 | 8 | 25 | 25 | 28 | 28 | 32 | 159 |
| Clamping -dia | W | 52 | 50 | 58 | 65 | 75 | 100 | 130 | 150 |
| Piston -stroke | X | 16 | 19 | 23 | 28 | 32 | 36 | 38 | 60.5 |
| Dimension Min-Max | Y | 9 | 15 | 31 | 36 | 32 | 46 | 48 | 48.5 |
| Square socket wrench | Z | 10 | 12 | 12 | 12 | 12 | 14 | 14 | 16 |
| Max.power at the draw bolt | kgf | 650 | 900 | 1200 | 1600 | 2000 | 2500 | 3200 | 4400 |
| Max. speed | rpm | 2500 | 2200 | 1900 | 1500 | 1000 | 750 | 500 | 400 |

| | | | | | | | | | |
|---------------------------------------|----|----|----|----|----|----|----|-----|-----|
| Weight with false jaws (approx) | kg | 10 | 14 | 20 | 32 | 48 | 81 | 140 | 170 |
|---------------------------------------|----|----|----|----|----|----|----|-----|-----|

