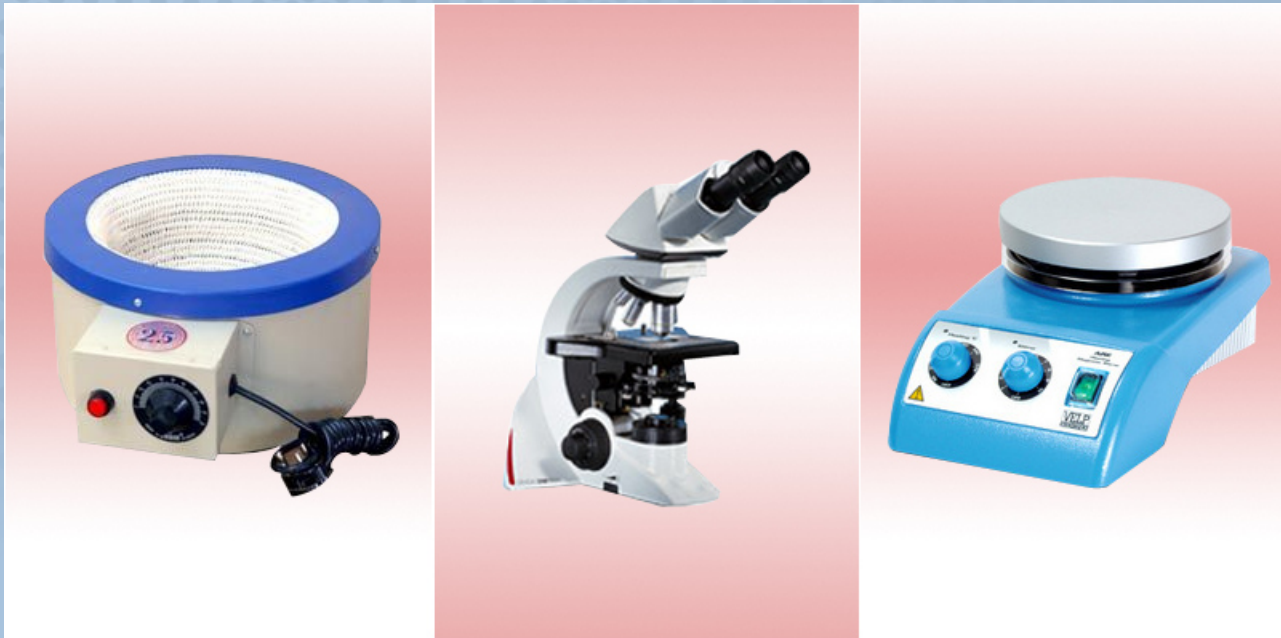


# Shamboo Scientific Glass Works



Corporate Brochure

A professionally managed company specializing in manufacturing, exporting and trading of “SSGW” brand laboratory equipment, glass instruments & equipment are fabricated from borosilicate and borosil glass.



# Shamboo Scientific Glass Works

- About Us -

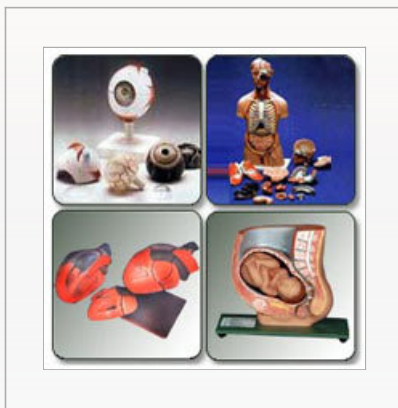
We have been engaged in manufacturing and exporting high quality international standard laboratory glassware equipment and apparatus like Carbon Dioxide Apparatus, Charles Law Apparatus etc. We endeavor to increase our product range with our improved fabrication process. Our prime objective is to get introduced in new markets and develop innovative products for research and education.

Our range of products comprises of a wide range of scientific educational equipment, scientific laboratory ware, laboratory equipment, laboratory glassware, scientific microscope, hospital equipment and many more. We emphasize on the quality, which is apparent from the first encounter with our well-trained associates. Our production unit is fully equipped to undertake the bulk supplies. We are relentlessly engrossed in manufacturing and exporting best quality laboratory products.

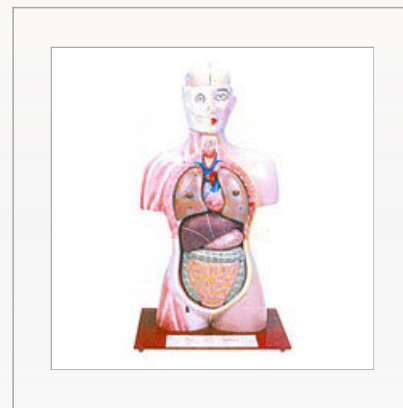
# Shamboo Scientific Glass Works

## Scientific Educational Equipment:

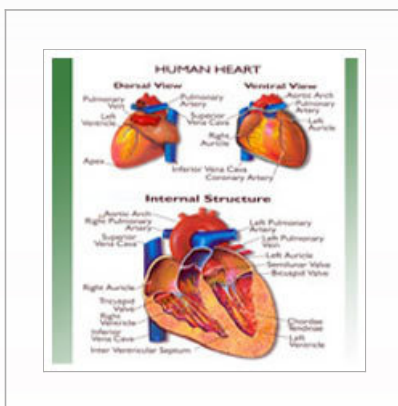
We offer wide array of scientific educational equipment that are manufactured using the best quality raw materials. Our products are available at industry leading prices. The range of our products include biological model, fiber glass model, heart model, human model and spinal model.



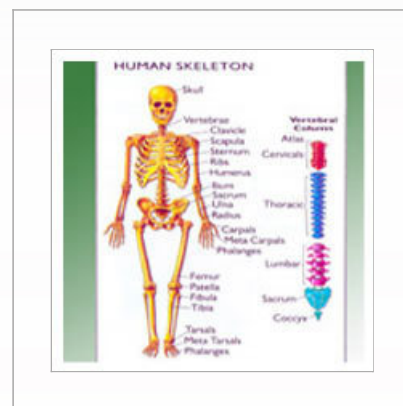
Fiber Glass Model



Biological Model



Heart Model



Human Model

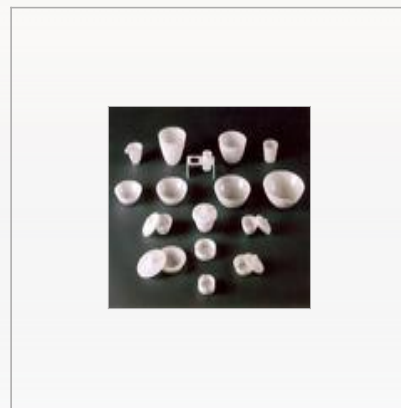
# Shamboo Scientific Glass Works

## Scientific Laboratory Ware:

We are consistently engaged in the manufacturing of quality scientific laboratory ware that are made from quality raw materials and produced involving cost effective ways. The array of our scientific laboratory ware consist of scientific plastic ware, scientific vials, laboratory utensil, stands, clamps, spectulas, lab desiccators and general laboratoryware.



Lab Desiccators



Silica Crucible



Automatic Pipette Washer

# Shamboo Scientific Glass Works

## Laboratory Equipment:

We offer wide array of laboratory equipment that widely cater to the requirement of pharma industry. Our laboratory equipment are designed and manufactured keeping in mind the specific requirements of our clients and are capable of conducting the experiments in a full proof manner and are a result of excellent workmanship of well experienced people.



Hot Plate Laboratory  
Round



Hot Plate Laboratory  
(Rectangular)



Digital Flocculator (Jar  
Tester)

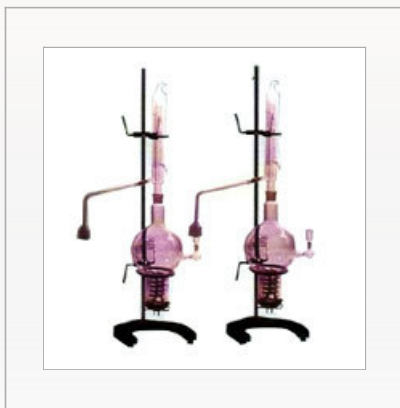


Cod Digestor

# Shamboo Scientific Glass Works

## Laboratory Glassware:

We offer wide array of laboratory glassware that are extensively used in science labs in schools and colleges, research institutes etc. Our laboratory glassware are known for quality, reliability and durability. These glasswares are manufactured using advanced technology and are available in latest designs providing an optimum level of performance.



**Double Distillation  
Apparatus**



**Quartz Distillation  
Apparatus**



**Laboratory Condensers**



**Double Water Still System**

# Shamboo Scientific Glass Works

## Scientific Microscope:

We offers different types of scientific microscope which are used for carrying out the research and for further development of the existing range of products.



Education Microscope



Lab Microscope



Clinical Microscope



Research Microscope

# Shamboo Scientific Glass Works

## Hospital Equipment:

We offer safe and hygienic hospital equipment that are engineered under the guidance of quality experts for comprehensive usage. Our equipment are sturdy and hygienic and are made using best quality raw materials.



**Surgical Table**



**Foot Suction Pump**



**Electric Fumigator**



**Utensil Sterilization**



# Shamboo Scientific Glass Works

## Laboratory Instruments:

We are manufacturer & exporter of all types of laboratory instruments brand name "SSGW" of very good quality.

kindly click on the link given below "**MORE DETAILED INFORMATION**" to see our list of laboratory instruments.



**Ultrasonic Bath**



**Vacuum Oven**



**Laminar Air Flow**



**Laboratory Autoclaves**

# Shamboo Scientific Glass Works

## General Laboratory Ware:

With the help of our expert workforce, we are designing and developing a wide range of general laboratory ware. These range include all kind of school laboratory ware, college laboratory ware and research laboratory ware.



**Retort Stand/Clamp/Boss  
Head**



**Test Tube Stand/Holder**



**Tuning Forks**



**Laboratory Compasses**

# Shamboo Scientific Glass Works

- Company Factsheet -

<b>Year of Establishment</b>	2004
<b>Nature of Business</b>	<ul style="list-style-type: none"><li>› Manufacturer</li><li>› Trader</li></ul>
<b>Total Number of Employees</b>	11 to 25 People
<b>Major Markets</b>	<ul style="list-style-type: none"><li>› Indian Subcontinent</li><li>› East/Middle Africa</li><li>› South/West Africa</li><li>› East Europe</li><li>› East Asia</li><li>› Central America</li><li>› North Europe</li><li>› Middle East</li><li>› South America</li><li>› South/West Europe</li><li>› South East Asia</li><li>› North America</li></ul>

# Shamboo Scientific Glass Works

- Contact Us -

## Contact Details:

### Shamboo Scientific Glass Works

Mr. Atul Sharma

No. 9, Pooja Vihar, Near Industrial Area, Ambala, Cantt  
Ambala, Haryana - 133 006, India

Website: [www.ssgwlab.com](http://www.ssgwlab.com)