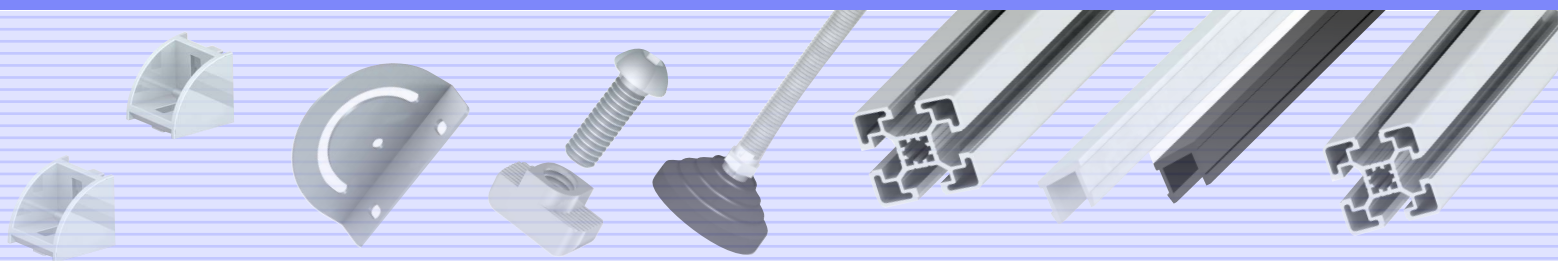


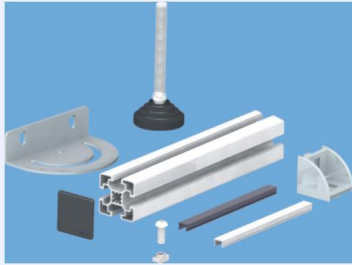


## Aluminium Profile Catalog - 2008

Version 1.0  
English



### Aluminium Profile and Accessories



- Extruded aluminium profiles
- Joining elements
- Levelling feet
- End covers and slot covers

### Assembly Tables



- Assembly tables with or without material feeding arrangement
- Assembly tables with or without tube lights and tool hanger arrangements

### Table with Electrical Height Adjustment



- Height adjustment upto 350 mm
- 150 kgs of load carrying capacity
- With or without material feeding arrangements

### Trolleys



- Material transfer trolleys
- Material storage trolleys
- Tool storage trolleys and stands

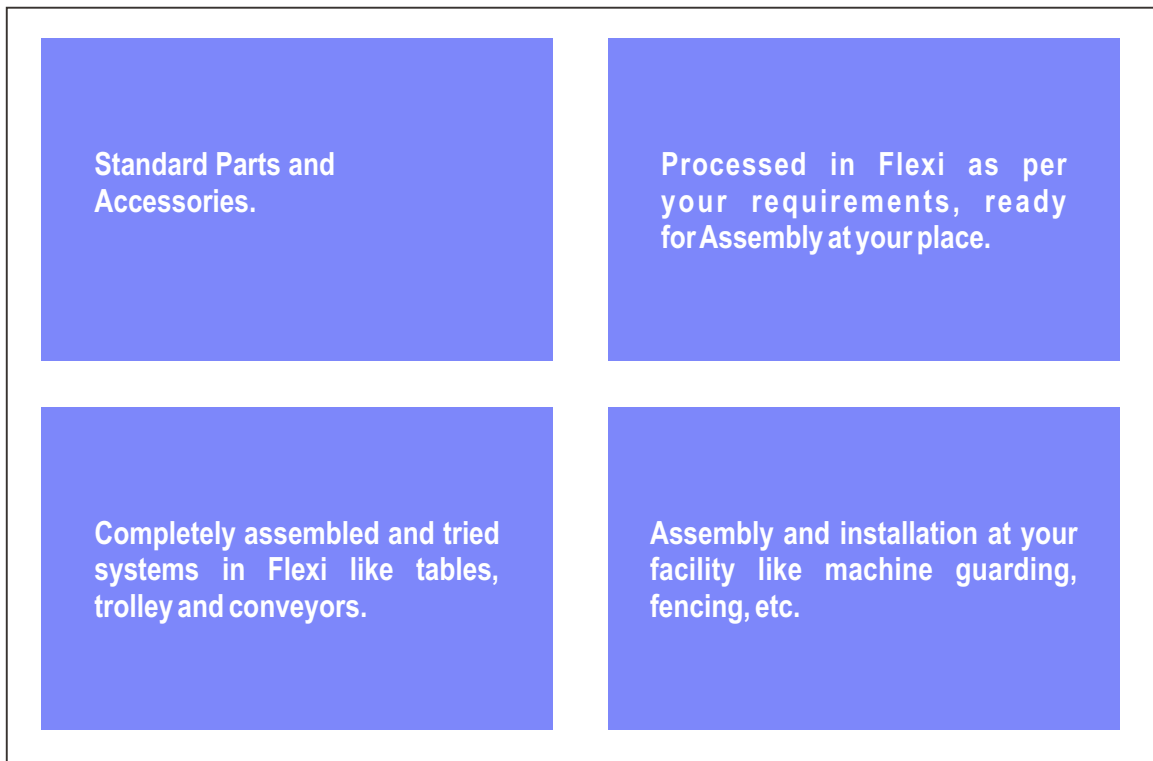
**Introduction and Overview**

Supply and Service options available from Flexi .....	02
Application of Aluminium Profile and Accessories .....	02
Application - Pictures .....	03

**Products**

Assembly Tables.....	05
Accessories and Options for Assembly Tables .....	06
Tables with Electrical Height Adjustment .....	08
Trolleys .....	09
Aluminium Profiles and Accessories .....	10

The various supply options available from Flexi suits your specific needs.

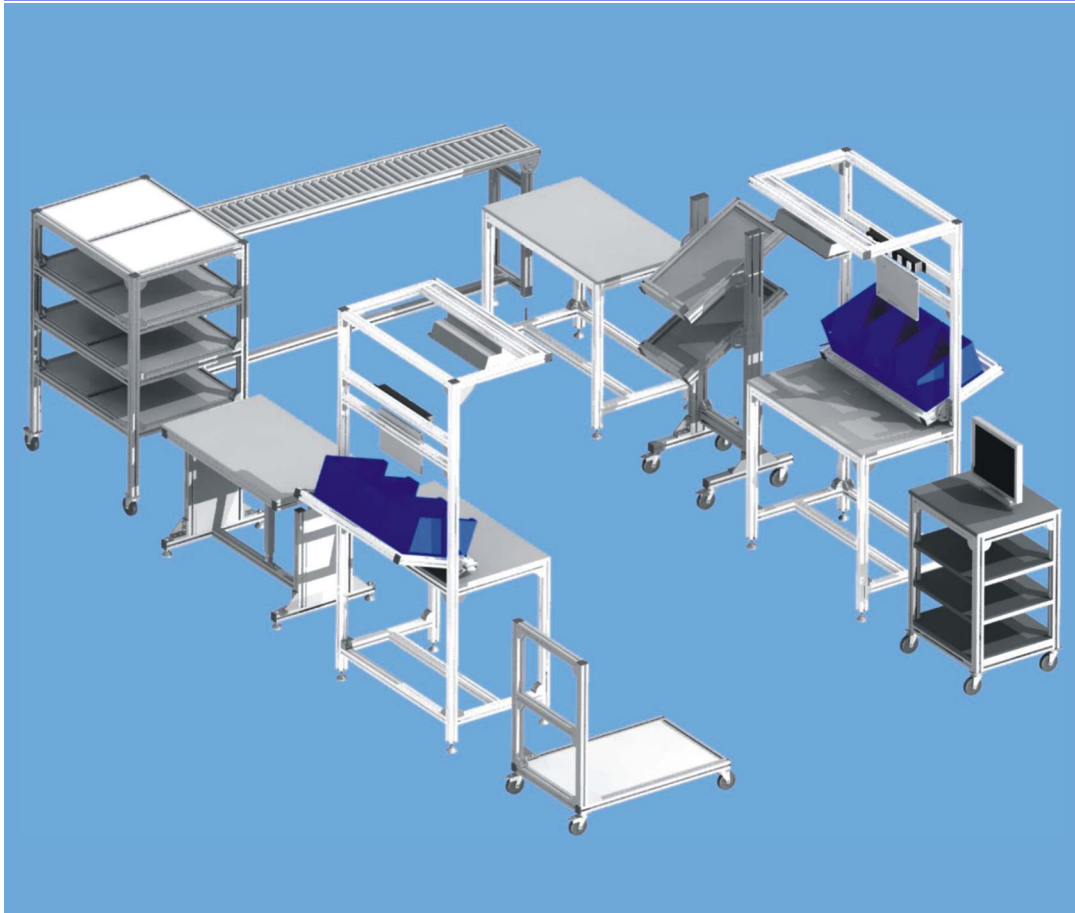


## Application of Aluminium Profile and Accessories

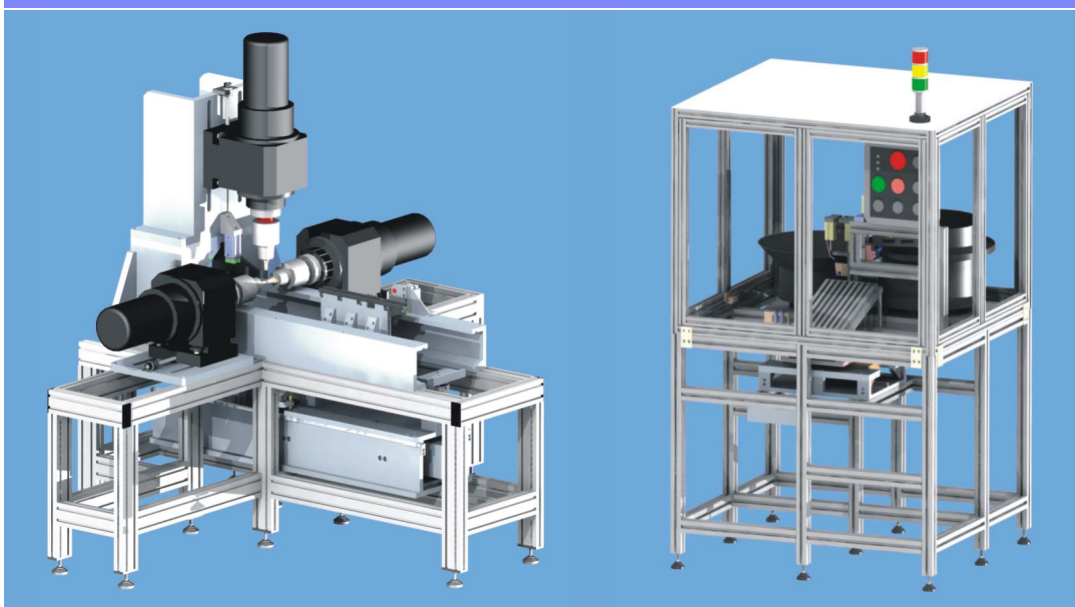
While the application of aluminium profile is very versatile, there are certain areas where they are used extensively.

- Construction of machine bases.
- Construction of machine guarding.
- Construction of assembly tables and work benches.
- Construction of trolleys and storage racks.
- Construction of various types of conveyors.
- Construction of work place fencing.
- Construction of elements mounting arrangement in machines and equipments.

Assembly Systems



Machine Bases And Construction



Machine Guarding



Conveyors



Assembly tables from Flexi can be customized to meet specific requirements of customers. The tables are available with various options and accessories.

Basic table

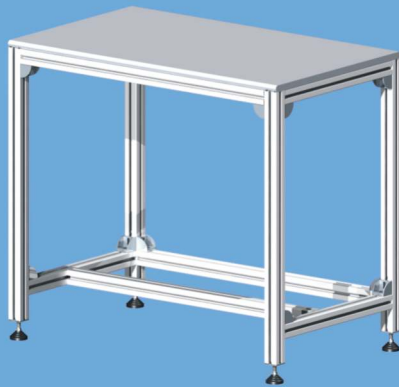


Table with side and back enclosure and foot rest

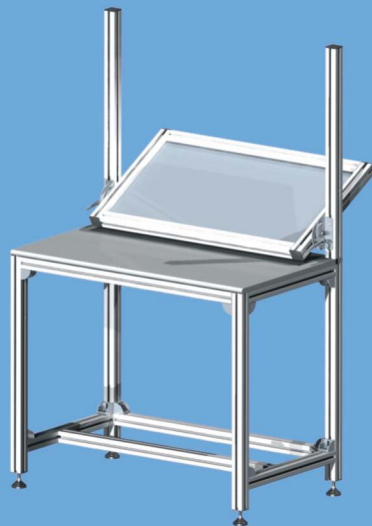


Table with material feeding arrangement

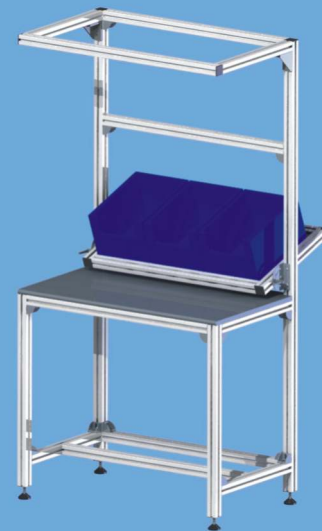
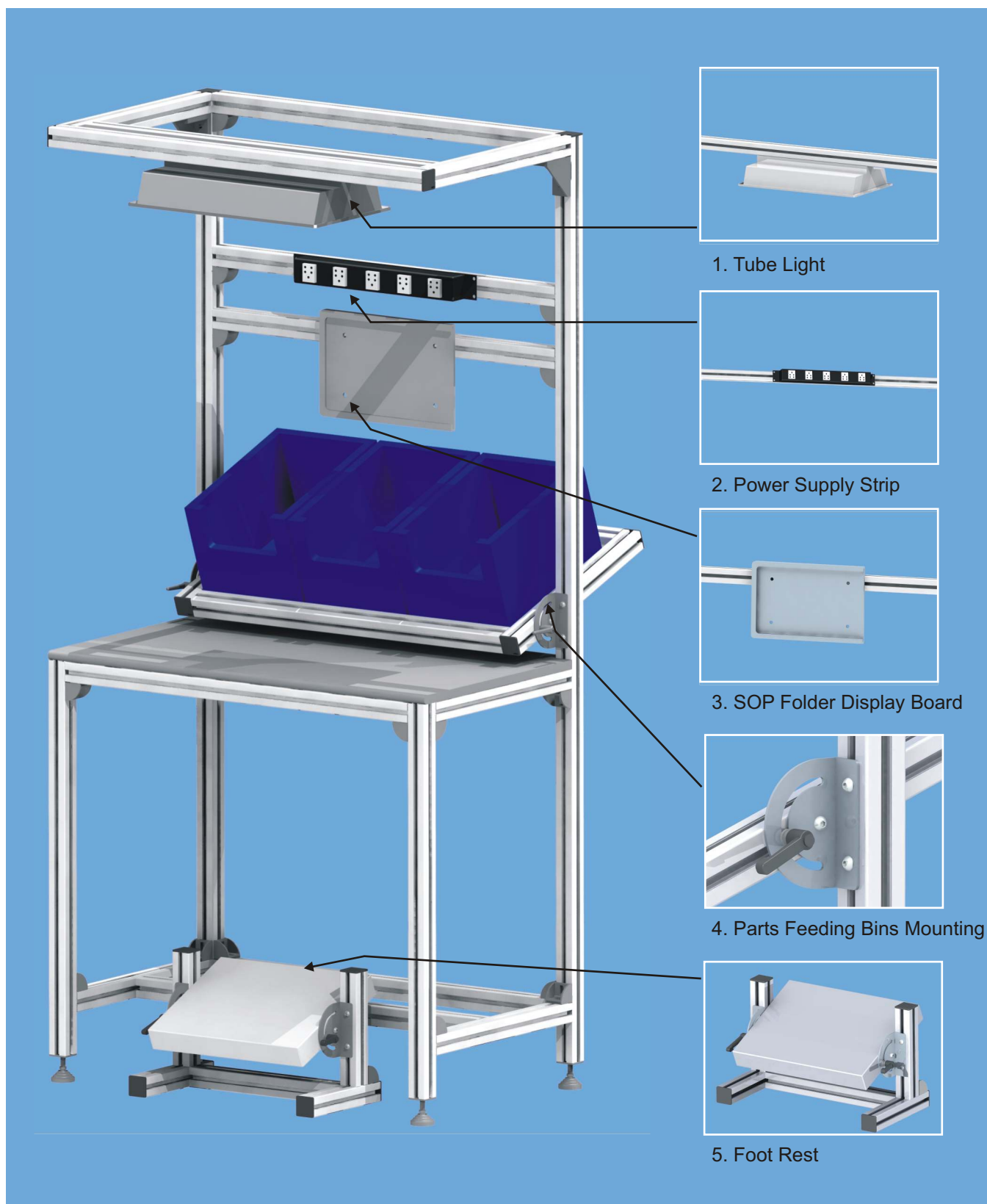


Table with material feeding arrangement & Tube light mounting and tool hanger



Various options and accessories are available for assembly tables to suit customers' requirements.

#### Table Top Material

- MS with proper surface protection like plating or painting
- Laminated plywood with required thickness
- Stainless steel

#### Foot Rest

- Floor mounting ( Stand alone type )
- Table mounting ( Integrated type )

#### Material Feeding Arrangement

- Mounted on table or mounted on individual trolleys
- Laminated plywood, all sides constructed with aluminium profile with adjustable angle
- Mild steel tray with roller or stainless steel with rollers
- Single layer or multi layer

#### Mounting Arrangement

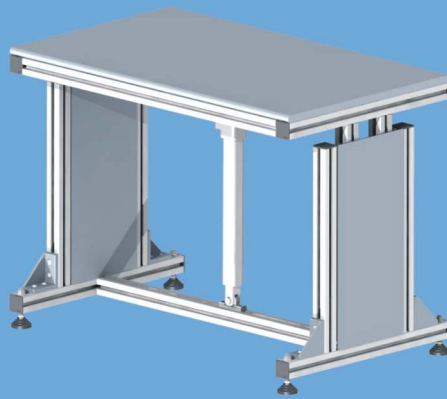
- Levelling feet mounted legs
- Castor wheels mounted legs
- Floor bracket for grouting

#### Other Options and Accessories

- Tube light mounting and tools fixing arrangement
- Compressed air supply points
- Electrical power supply point

Tables with Electrical Height Adjustment are available from Flexi with various options and accessories.

### Electrically Height Adjustable Table



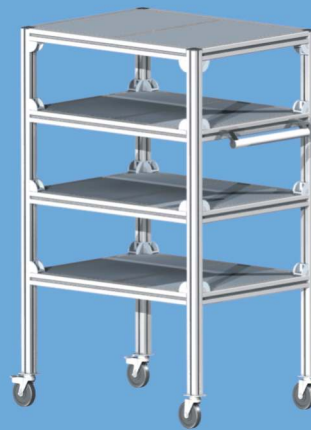
- Height adjustment of 350 mm with a minimum height of 900 mm.
- Can take a load of upto 150 Kgs.
- Material feeding arrangement, tube light fixing arrangement and tool hanging arrangement can be provided as options.
- Levelling feet or castor wheels can be provided as options.
- Any customer specified size of table is possible.

Various types of trolleys are available from Flexi to meet every need of customer. Let it be transferring material or feed the material to the assembly line, storage of parts or tools, you can either choose from our standard design or we can customise the trolley for you.

Placed behind assembly tables for feeding component to assembly



Used for storing material or tools in assembly area

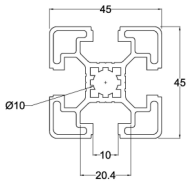


Used for transferring material to assembly area



Used for mounting PCs and other similar monitoring devices

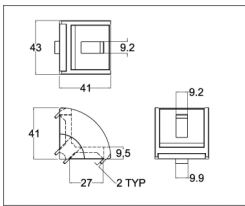
Part Name : Aluminium profile 45 x 45 - four sides open



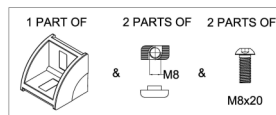
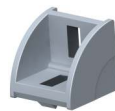
Material : Aluminium  
 Mass (kg/m) : 1.6  
 Finish : Anodised  
 Groove Size : G10  
 Maximum Supply Length (m) : 6  
 Core Hole Tapping : M12

Part Number : AA100

Part Name : L corner mount bracket 45 length x 45 height x 45 width



Detail 1



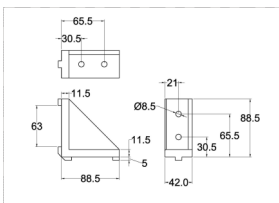
Detail 2



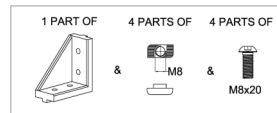
Material : Diecast Aluminium  
 Groove Size : G10  
 Mounting Angle : 90°

Part Number : Detail 1 - AD100  
 : Detail 2 - AD104

Part Name : L corner mount bracket 90 length x 90 height x 45 width



Detail 1



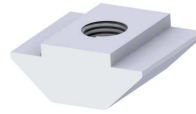
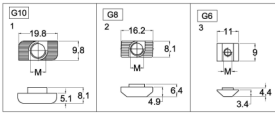
Detail 2



Material : Diecast Aluminium  
 Groove Size : G10  
 Mounting Angle : 90°

Part Number : Detail 1 - AD103  
 : Detail 2 - AD105

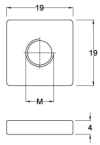
Part Name : T nut G10



Material : Galvanised Steel  
Groove Size : G10

Part Number : G10 M8 - AE100  
: G10 M6 - AE101  
: G10 M5 - AE102  
: G10 M4 - AE103

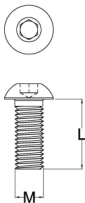
Part Name : Flat square nut G10



Material : Galvanised Steel  
Groove Size : G10

Part Number : G10 M8 - AE104  
: G10 M6 - AE105  
: G10 M5 - AE106  
: G10 M4 - AE107

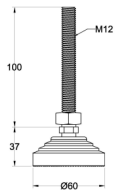
Part Name : Button head bolt



Material : Galvanised Steel  
Groove Size : G10

Part Number : M8 - AF100  
: M6 - AF101  
: M5 - AF102  
: M4 - AF103

Part Name : Support and levelling foot



Bottom Support Material : PA  
Thread Material : Galvanised Steel

Part Number : AG100

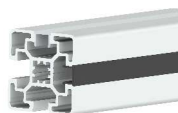
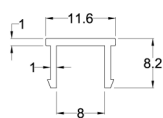
Part Name : End cover - flat



Material : PA  
Colour : Black / Grey

Part Number : Black Colour - AB100  
: Grey Colour - AB101

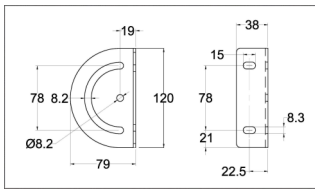
Part Name : Slot cover G10



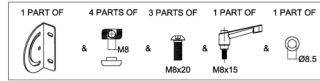
Material : PA  
Groove Size : G10  
Colour : Black / Grey

Part Number : Black Colour - AC100  
: Grey Colour - AC101

Part Name : Bent swivel mount bracket



Detail 1



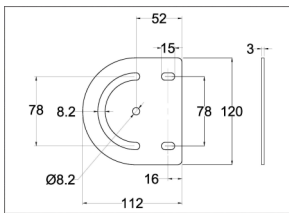
Detail 2



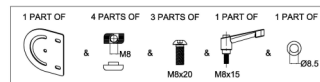
Bracket Material : Galvanised Steel  
 Handle Material : PA  
 Fasteners Material : Galvanised Steel

Part Number : Detail 1 - AD101  
 : Detail 2 - AD109

Part Name : Straight swivel mount bracket



Detail 1



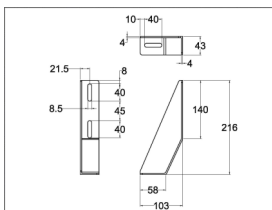
Detail 2



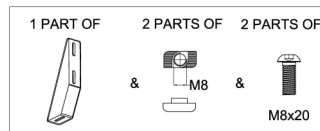
Bracket Material : Galvanised Steel  
 Handle Material : PA  
 Fasteners Material : Galvanised Steel

Part Number : Detail 1 - AD102  
 : Detail 2 - AD110

Part Name : Floor bracket



Detail 1



Detail 2



Bracket Material : Galvanised Steel  
 Finish : Powder Coating  
 Colour : Black  
 Fasteners Material : Galvanised Steel

Part Number : Detail 1 - AD111  
 : Detail 2 - AD107 (without grouting bolt)  
 : Detail 2 - AD108 (with grouting bolt)



**Flexi Manufacturing Solutions Private Limited**  
174, Bommasandra Industrial Area,  
Bangalore - 560 099,  
Karnataka, India.

Telefax : 080 - 27835800  
E-Mail : [marketing@flexisolutions.co.in](mailto:marketing@flexisolutions.co.in)  
Website : [www.flexisolutions.co.in](http://www.flexisolutions.co.in)

---