

GE Fanuc Automation



Control Electric Co. Pvt. Ltd.

Tel:(+91)120 4217191, 4217189, 09818689117
sales@plcpanel.com

Controller & I/O Solutions

More choices for your applications

Control Electric Co. Pvt. Ltd.

QuickPanel[®] View

GE Fanuc markets and sells QuickPanel View products that are designed to meet the market needs of companies in the Americas and Asia Pacific.

QuickPanel View bundled visualization solution provides the tools required for today's application needs. By integrating the QuickPanel family of touch screens with Proficy[®] Machine Edition software, QuickPanel View delivers flexible, scalable performance on a rugged hardware platform. The intuitive environment of Proficy View – Machine Edition software helps reduce application development time, and connectivity is made easy with a family of serial, Ethernet and Fieldbus interfaces.

Features include:

- Display sizes from 6" to 15"
- Choice of Monochrome, Color-STN, or Color-TFT display

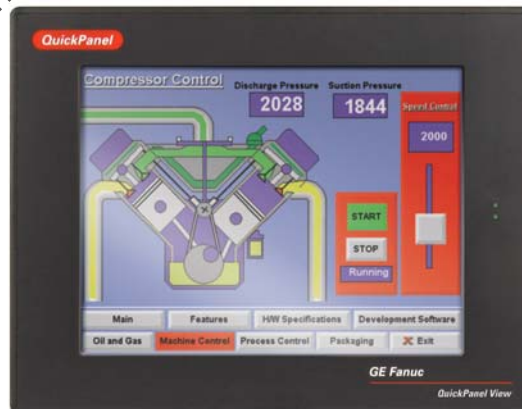
- Microsoft Windows[®] CE operating system
- Expandable memory and Fieldbus cards[†]
- CompactFlash[†]
- Functions from data collection and trending to system security and alarming
- Built-in web server for access to data, and panels using any standard browser[†]
- Communication over serial, Ethernet, and communication expansion cards[†]
- Multi-language support selectable by the operator when the system is online
- Shared tags for increased productivity – applications developed for QuickPanel View can share tags with other Proficy Machine Edition applications, eliminating the need to enter the data more than once
- Migration of applications developed with QuickDesigner

- Extensive library of pre-configured animation objects
- UL Class 1 Div 2 (A, B, C, D), ATEX Class 1, Zone 2, CE Mark

[†]Available on select models. See following pages for availability.

Proficy Machine Edition

Proficy Machine Edition is an advanced software environment for the development and maintenance of machine level automation. Visualization, motion control and execution logic are developed with a single programmer.



Operator Interfaces



Available in a variety of display sizes, the QuickPanel View bundled visualization solution provides the tools required for today's application needs. By integrating the best-selling QuickPanel family of touch screens with award-winning Proficy Machine Edition software, QuickPanel View delivers flexible, scalable performance on a rugged hardware platform. The intuitive environment of Proficy View - Machine Edition software helps reduce application development time, and connectivity is made easy with a family of serial, Ethernet and Fieldbus interfaces.

	IC754VSB06MTD	IC754VSI06MTD	IC754VSI06STD
Product Name	QuickPanel View Display, 6" Monochrome Basic	QuickPanel View Display, 6" Monochrome Intermediate	QuickPanel View Display, 6" STN-Color Intermediate
Display Size	5.7" (Diagonal)	5.7" (Diagonal)	5.7" (Diagonal)
Display Type	6" Mono	6" Mono	6" Color-STN
Resolution	320 x 240 pixels	320 x 240 pixels	320 x 240 pixels
Memory: DRAM	16 MB	32 MB	32 MB
Memory: Expandable	No	To 96 MB	To 96 MB
Serial: Com #1	RS232/RS485	RS232/RS485	RS232/RS485
Serial: Com #2	None	None	None
Ethernet: LAN #1	Download Only	10/100 Mbps	10/100 Mbps
Ethernet: LAN #2	None	None	None
Communication Expansion	None	GE Fanuc Genius, Data Highway Plus ¹ , DeviceNet Slave, & PROFIBUS Slave	GE Fanuc Genius, Data Highway Plus ¹ , DeviceNet Slave, & PROFIBUS Slave
Compact Flash	None	One, Type 2	One, Type 2
Agency Approvals	UL-Class 1 Div 2 (A, B, C, D) ATEX - Class 1 Zone 2 CE Mark	UL-Class 1 Div 2 (A, B, C, D) ATEX - Class 1 Zone 2 CE Mark	UL-Class 1 Div 2 (A, B, C, D) ATEX - Class 1 Zone 2 CE Mark
Environmental Rating	NEMA 4/12/4X, IP65 when properly mounted in an IP65 rated enclosure	NEMA 4/12/4X, IP65 when properly mounted in an IP65 rated enclosure	NEMA 4/12/4X, IP65 when properly mounted in an IP65 rated enclosure
Panel Cut-Out (W x H x D)	6.14" x 4.86" x 2.03" (158mm x 126mm x 52mm)	6.14" x 4.86" x 2.76" (158mm x 126mm x 70mm)	6.14" x 4.86" x 2.76" (158mm x 126mm x 70mm)
Front of Panel & Depth (W x H x D)	8.00" x 6.17" x 0.85" (203mm x 157mm x 22mm)	8.00" x 6.17" x 0.85" (203mm x 157mm x 22mm)	8.00" x 6.17" x 0.85" (203mm x 157mm x 22mm)
Input Voltage	10.8 to 30.0 VDC	10.8 to 30.0 VDC	10.8 to 30.0 VDC
Power Consumption	Less than 24W @ 24 VDC	Less than 24W @ 24 VDC	Less than 24W @ 24 VDC
Operating Temperature	-10 to 60°C (14 to 140°F)	-10 to 60°C (14 to 140°F)	0 to 60°C (32 to 140°F)
Storage Temperature	-20 to 70°C (-4 to 158°F)	-20 to 70°C (-4 to 158°F)	-20 to 70°C (-4 to 158°F)
Operating Humidity	10% to 85% non-condensing	10% to 85% non-condensing	10% to 90% non-condensing
Indicators - LEDs	bi-color (pwr), tri-color (user)	bi-color (pwr), tri-color (user)	bi-color (pwr), tri-color (user)

¹Consult factory for availability.

QuickPanel View



	IC754VSI06SKTD	IC754VSI12MTD	IC754VSI12CTD
Product Name	QuickPanel View Display, 6" STN-Color Intermediate with Keypad	QuickPanel View Display, 12" Monochrome Intermediate	QuickPanel View Display, 12" TFT-Color Intermediate
Display Size	5.7" (Diagonal)	12.1" (Diagonal)	12.1" (Diagonal)
Display Type	6" Color-STN	12" Mono	12" Color-TFT
Resolution	320 x 240 pixels	800 x 600 pixels	800 x 600 pixels
Memory: DRAM	32 MB	32 MB	32 MB
Memory: Expandable	To 96 MB	To 96 MB	To 96 MB
Serial: Com #1	RS232/RS485	RS232/RS485	RS232/RS485
Serial: Com #2	None	None	None
Ethernet: LAN #1	10/100 Mbps	10/100 Mbps	10/100 Mbps
Ethernet: LAN #2	None	None	None
Communication Expansion	GE Fanuc Genius, Data Highway Plus, DeviceNet Slave, & PROFIBUS Slave	GE Fanuc Genius, Data Highway Plus ¹ , DeviceNet Slave, & PROFIBUS Slave	GE Fanuc Genius, Data Highway Plus ¹ , DeviceNet Slave, & PROFIBUS Slave
Compact Flash	One, Type 2	One, Type 2	One, Type 2
Agency Approvals	UL-Class 1 Div 2 (A, B, C, D) ATEX - Class 1 Zone 2 CE Mark	UL-Class 1 Div 2 (A, B, C, D) ATEX - Class 1 Zone 2 CE Mark	UL-Class 1 Div 2 (A, B, C, D) ATEX - Class 1 Zone 2 CE Mark
Environmental Rating	NEMA 4/12/4X, IP65 when properly mounted in an IP65 rated enclosure	NEMA 4/12/4X, IP65 when properly mounted in an IP65 rated enclosure	NEMA 4/12/4X, IP65 when properly mounted in an IP65 rated enclosure
Panel Cut-Out (W x H x D)	11.88" x 8.96" x 2.37" (302mm x 228mm x 60mm)	11.88" x 8.96" x 2.37" (302mm x 228mm x 60mm)	11.88" x 8.96" x 2.37" (302mm x 228mm x 60mm)
Front of Panel & Depth (W x H x D)	13.26" x 10.34" x 0.38" (337mm x 263mm x 10mm)	13.26" x 10.34" x 0.38" (337mm x 263mm x 10mm)	13.26" x 10.34" x 0.38" (337mm x 263mm x 10mm)
Input Voltage	12 VDC @ ±20% or 24 VDC @ ±20%	12 VDC @ ±20% or 24 VDC @ ±20%	12 VDC @ ±20% or 24 VDC @ ±20%
Power Consumption	Less than 24W @ 24 VDC	Less than 48W @ 24 VDC	Less than 48W @ 24 VDC
Operating Temperature	0 to 60°C (32 to 140°F)	0 to 50°C (32 to 122°F)	0 to 50°C (32 to 122°F)
Storage Temperature	-20 to 70°C (-4 to 158°F)	-20 to 70°C (-4 to 158°F)	-20 to 70°C (-4 to 158°F)
Operating Humidity	10% to 90% non-condensing	10% to 90% non-condensing	10% to 90% non-condensing
Indicators - LEDs	bi-color (pwr), tri-color (user)	bi-color (pwr), tri-color (user)	bi-color (pwr), tri-color (user)

¹Consult factory for availability.

Operator Interfaces



Available in a variety of display sizes, the QuickPanel View bundled visualization solution provides the tools required for today's application needs. By integrating the best-selling QuickPanel family of touch screens with award-winning Proficy Machine Edition software, QuickPanel View delivers flexible, scalable performance on a rugged hardware platform. The intuitive environment of Proficy View - Machine Edition software helps reduce application development time, and connectivity is made easy with a family of serial, Ethernet and Fieldbus interfaces. Full-featured QuickPanel View modules take Operator Interface products to an entirely new level of openness. A built-in web server provides access to data and graphics using any standard browser.

	IC754VSL06MTD	IC754VSL06CTD	IC754VSL12CTD	IC754VSF15CTD
Product Name	QuickPanel View Display, 6" Mono Loaded	QuickPanel View Display, 6" TFT-Color Loaded	QuickPanel View Display, 12" TFT-Color Loaded	QuickPanel View Display, 15" TFT-Color Loaded
Display Size	5.7" (Diagonal)	5.7" (Diagonal)	12.1" (Diagonal)	15.1" (Diagonal)
Display Type	6" Mono	6" Color-TFT	12" Color-TFT	15" Color-TFT
Resolution	320 x 240 pixels	320 x 240 pixels	800 x 600 pixels	1024 x 768 pixels
Memory: DRAM	32 MB	32 MB	32 MB	64 MB
Memory: Expandable	To 96 MB	To 96 MB	To 96 MB	128 MB
Serial: Com #1	RS232/RS485	RS232/RS485	RS232/RS485	RS232/RS485
Serial: Com #2	RS232	RS232	RS232	RS232
Ethernet: LAN #1	10/100 Mbps	10/100 Mbps	10/100 Mbps	10/100 Mbps
Ethernet: LAN #2	None	None	10 Mbps	10/100 Mbps
Communication Expansion	GE Fanuc Genius, Data Highway Plus ¹ , DeviceNet Slave, & PROFIBUS Slave	GE Fanuc Genius, Data Highway Plus ¹ , DeviceNet Slave, & PROFIBUS Slave	GE Fanuc Genius, Data Highway Plus ¹ , DeviceNet Slave, & PROFIBUS Slave	GE Fanuc Genius, Data Highway Plus ¹ , DeviceNet Slave, & PROFIBUS Slave
Compact Flash	One, Type 2	One, Type 2	One, Type 2	One, Type 2
Agency Approvals	UL - Class 1 Div 2 (A, B, C, D) ATEX - Class 1 Zone 2 CE Mark	UL - Class 1 Div 2 (A, B, C, D) ATEX - Class 1 Zone 2 CE Mark	UL - Class 1 Div 2 (A, B, C, D) ATEX - Class 1 Zone 2 CE Mark	UL - Class 1 Div 2 (A, B, C, D) ATEX - Class 1 Zone 2 CE Mark
Environmental Rating	NEMA 4/12/4X, IP65 when properly mounted in an IP65 rated enclosure	NEMA 4/12/4X, IP65 when properly mounted in an IP65 rated enclosure	NEMA 4/12/4X, IP65 when properly mounted in an IP65 rated enclosure	NEMA 4/12/4X, IP65 when properly mounted in an IP65 rated enclosure
Panel Cut-Out (W x H x D)	6.14" x 4.86" x 2.76" (158mm x 126mm x 70mm)	6.14" x 4.86" x 2.76" (158mm x 126mm x 70mm)	11.88" x 8.96" x 2.37" (302mm x 228mm x 60mm)	14.93" x 12.03" x 2.78" (379mm x 305mm x 71mm)
Front of Panel & Depth (W x H x D)	8.00" x 6.17" x 0.85" (203mm x 157mm x 22mm)	8.00" x 6.17" x 0.85" (203mm x 157mm x 22mm)	13.26" x 10.34" x 0.38" (337mm x 263mm x 10mm)	15.70" x 12.73" x 0.40" (399mm x 323mm x 10mm)
Input Voltage	10.8 to 30.0 VDC	10.8 to 30.0 VDC	12 VDC @ ±20% or 24 VDC @ ±20%	12 VDC @ ±20% or 24 VDC @ ±20%
Power Consumption	Less than 24W @ 24 VDC	Less than 24W @ 24 VDC	Less than 48W @ 24 VDC	Less than 60W @ 24 VDC
Operating Temperature	-10 to 60°C (14 to 140°F)	0 to 60°C (32 to 140°F)	0 to 50°C (32 to 122°F)	0 to 50°C (32 to 122°F)
Storage Temperature	-20 to 70°C (-4 to 158°F)	-20 to 70°C (-4 to 158°F)	-20 to 70°C (-4 to 158°F)	-20 to 60°C (-4 to 140°F)
Operating Humidity	10% to 90% non-condensing	10% to 90% non-condensing	10% to 90% non-condensing	10% to 90% non-condensing
Indicators - LEDs	bi-color (pwr), tri-color (user)	bi-color (pwr), tri-color (user)	bi-color (pwr), tri-color (user)	bi-color (pwr), tri-color (user)

¹Consult factory for availability.