

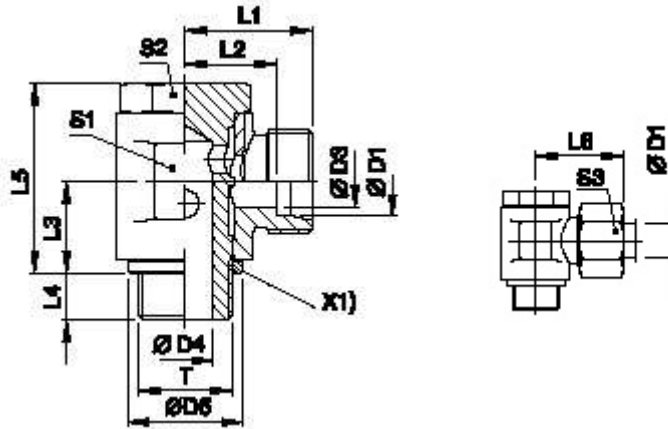
HYDROTEK ENGINEERS & CONTRACTORS, GHAZIABAD

SWVE – BANJO CONNECTOR

24° CONE END

FOR

AVAILABLE IN CARBON STEEL & STAINLESS STEEL.



SERIES	DIN2353 SPEC.	T BSP/BSPT THREAD	D1	D5	L6	L2	L3	L5	S3	S2	S1
L	SWVE06LR1/8	1/8"	06	15	28	12.5	12	28	14	19	19
	SWVE08LR1/4	¼"	08	22	29	14.0	15.5	34	17	19	22
	SWVE10LR1/4	¼"	10	22	31	15.5	18	34	19	19	22
	SWVE12LR3/8	3/8"	12	24	33	17.5	18	39	22	17	22
	SWVE15LR1/2	½"	15	29	35	20	20	46	27	19	27
	SWVE18LR1/2	½"	18	29	36	19.5	20	46	32	22	32
	SWVE22LR3/4	¾"	22	35	44	27	25.5	60	36	27	36
	SWVE28LR1	1"	28	43	46	29.5	29	67	41	36	41
	SWVE35LR1.1/4	1. ¼"	35	53	55	33	34	78	55	41	55
	SWVE42LR1.1/2	1. ½"	42	59	63	40	41.5	88	60	50	60
S	SWVE06SR1/4	¼"	06	22	31	16	15.5	34	17	27	17
	SWVE08SR1/4	¼"	08	22	31	16	15.5	34	19	24	19
	SWVE10SR3/8	3/8"	10	24	35	18	18	39	22	27	22
	SWVE12SR3/8	3/8"	12	24	35	18	18	39	24	27	24
	SWVE14SR1/2	½"	14	29	40	22	21	46	27	32	27
	SWVE16SR1/2	½"	16	29	40	21.5	21	46	32	32	32
	SWVE20SR3/4	¾"	20	35	50	28.5	28	60	36	41	36
	SWVE25SR1	1"	25	43	55	31	31	67	46	32	46
	SWVE30SR1.1/4	1. ¼"	30	53	63	36.5	36.5	78	55	50	55
	SWVE38SR1.1/2	1. ½"	38	59	72	41	41.5	88	60	55	60